

# Erie County Treatment Gaps and Barriers Analysis

## [2015]

	Page
<b>Gaps and Barriers Analysis Overview and Results</b>	4
<b>Descriptive Maps of Treatment Program Locations:</b>	
All Programs and Types [with Municipal Boundaries]	6
Crisis Programs [with Municipal Boundaries]	7
Inpatient [with Municipal Boundaries]	8
Methadone Programs [with Municipal Boundaries]	9
Outpatient Programs [with Municipal Boundaries]	10
Residential Programs [with Municipal Boundaries]	11
<b>Maps of Highest Risk Locations with Treatment Programs:</b>	
Erie County Excluding the City of Buffalo [with Municipal Boundaries]	
All Programs and Types	12
Crisis Programs	13
Inpatient Programs	14
Methadone Programs	15
Outpatient Programs	16

Residential Programs	17
City of Buffalo Only	
All Programs and Types	18
Crisis Programs	19
Inpatient Programs	20
Methadone Programs	21
Outpatient Programs	22
Residential Programs	23

**Accessibility Maps**

Erie County Excluding Buffalo [with Municipal Boundaries]

All Programs and Types	24
Crisis Programs	25
Inpatient Programs	26
Methadone Programs	27
Outpatient Programs	28
Residential Programs	29
City of Buffalo Only	
All Programs and Types	30

Crisis Programs	31
Inpatient Programs	32
Methadone Programs	33
Outpatient Programs	34
Residential Programs	35

## **Gaps and Barriers Analysis Overview**

The Gaps and Barriers Analysis for Treatment Services in Erie County compares the provision of treatment services within each zip code area to selected risk indicators. Gaps are identified where there is a mismatch between the treatment services and risk level (e.g. no/low treatment provision & high risk). First, the distribution of treatment services was evaluated by compiling information about treatment programs and their locations through the NYS Office of Alcoholism and Substance Abuse Services (OASAS). This data was tallied by zip code for each program type.

Maps were developed from these data to evaluate the spatial distribution of programs in Erie County and then to examine existing gaps in service provision. The maps of treatment programs are broken down into five categories that correspond to none, one, a few (2 or 3), some (4 or 5) and many (more than 5). The gaps and barriers analysis for treatment programs compares the highest level of aggregated risk for ZIP codes in Erie County with the number of treatment programs. Risk Indicators Database (RIDB) measures were summed and then re-quartiled for this aggregated risk measure; the locations with the highest level of risk are those with aggregated measures that fall in the fourth quartiles of either ZIP codes in Erie County excluding City of Buffalo and ZIP codes in the City of Buffalo only.

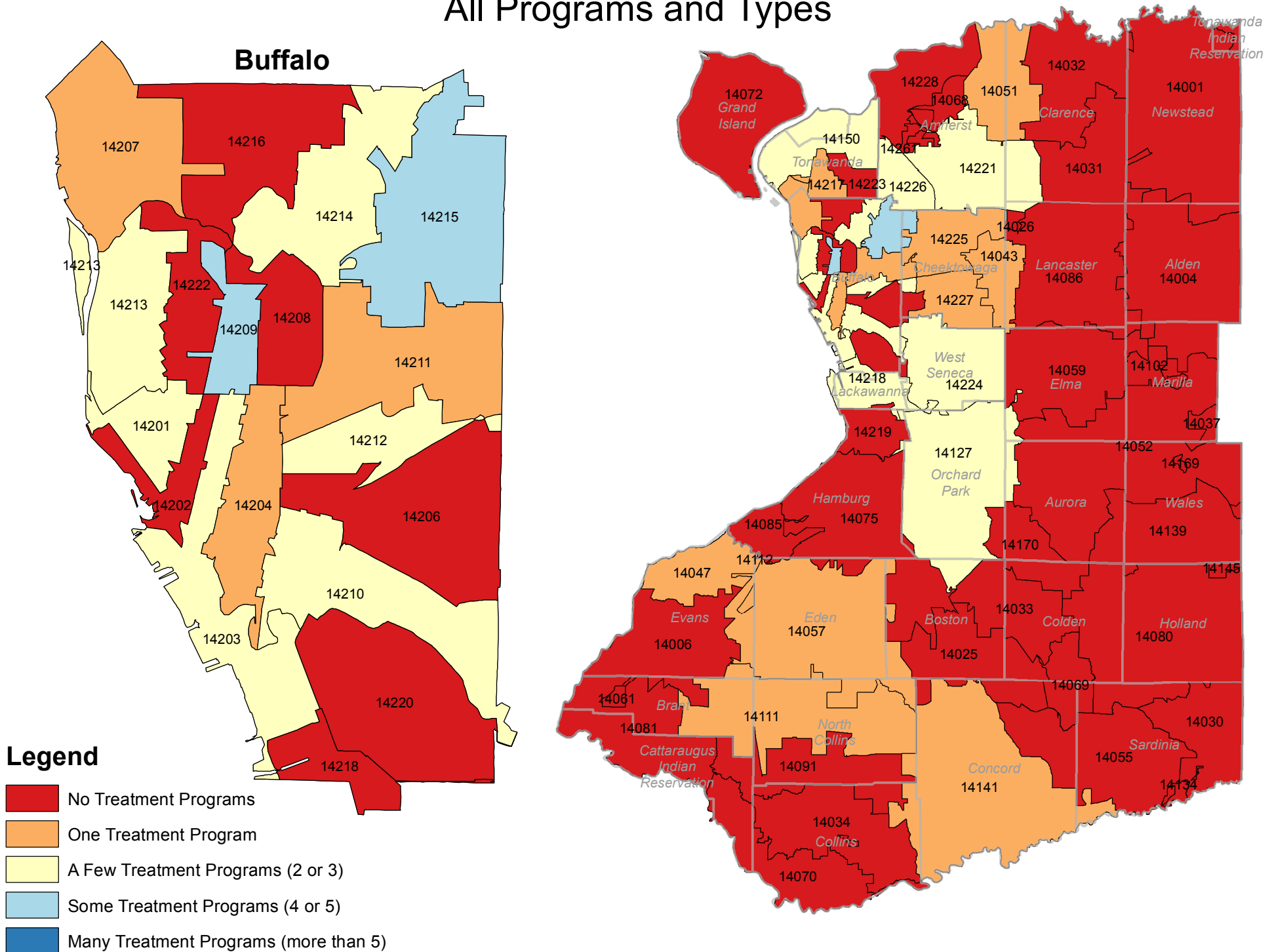
Accessibility was measured using definitions instituted by the U.S. Department of Agriculture Economic Research Service through research on food access. In urban areas, accessibility is defined as being within 1 mile; and in rural areas, within 10 miles. Maps showing ZIP codes of highest risk were derived by creating straight line distance buffers around the geocoded locations of OASAS treatment program locations for both Erie County excluding Buffalo and the City of Buffalo only. These locations included programs from neighboring counties if they were within 10 miles of the Erie County border.

## **Gaps and Barriers Analysis Results**

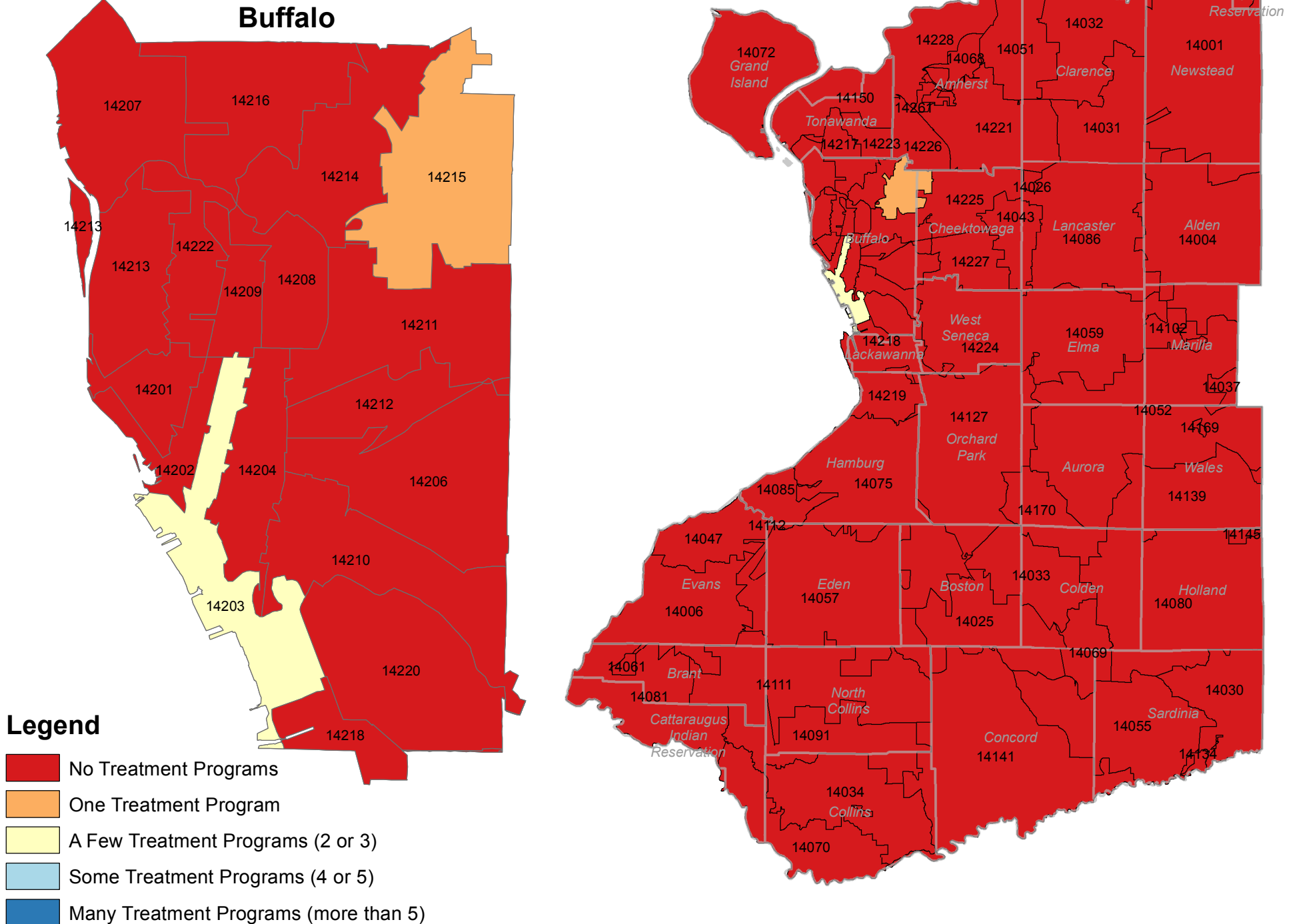
- Descriptive Maps of Treatment Program Locations
  - Many ZIP codes in Erie County do not contain any type of treatment program, particularly in the eastern and southwestern portions of the county.
  - Crisis and methadone oriented programs are found only within the City of Buffalo.
  - Inpatient and residential programs are largely concentrated in the City of Buffalo and the immediately surrounding suburbs.
  - Outpatient programs are the most common, and are more evenly distributed throughout the northwestern part of the county, but many ZIP codes in the eastern and southwestern parts of the county contain no programs.
- Maps of Highest Risk Locations with Treatment Programs
  - Erie County Excluding City of Buffalo
    - ZIP codes with highest aggregated risk have few or no treatment programs. Some of the more urbanized zip codes north and east of the City of Buffalo have between 1 and 3 programs, while 14141 in the southern end of the county has 1 program. ZIP codes 14070, 14091, and 14219, and 14228, which are among the ZIP codes at the highest risk, have no treatment programs.
    - None of the 8 high risk ZIP codes have crisis, inpatient, methadone, or residential oriented programs.

- City of Buffalo Only
  - Most locations of highest aggregated risk have between 1 and 3 treatment programs.
  - ZIP code 14202, a portion of downtown Buffalo, contains no programs.
- Accessibility Maps
  - Erie County Excluding City of Buffalo
    - Overall accessibility in Erie County based on all treatment programs and types is high.
    - Almost all of Erie County has good accessibility to outpatient treatment programs. With the exception of a small portion of 14070, no highest risk ZIP codes are more than 10 miles from this type of program.
    - Most of the county has access to residential treatment programs. In southern Erie County, portions of the highest risk ZIP codes 14034, 14070, and 14141 are more than 10 miles from this type of program.
    - Most of the county does not have access to crisis, inpatient, or methadone treatment programs. Access is concentrated in ZIP codes closest to the City of Buffalo. In southern Erie County all areas of the highest risk ZIP codes 14070, 14091, and 14141 are more than 10 miles from these types of programs.
  - City of Buffalo Only
    - Overall accessibility in Buffalo based on all treatment programs and types is moderate. Small portions of the highest risk ZIP codes 14204 and 14211, and large portions of the highest risk ZIP code 14203 are more than 1 mile from any treatment programs.
    - The most prevalent program type in Buffalo is outpatient. Small portions of the highest risk ZIP codes 14202 and 14204, and large portions of the highest risk ZIP codes 14203 and 14211 are more than 1 mile from any treatment programs.
    - Portions of highest risk ZIP codes 14202, 14203, 14204, and almost all of 14211 are more than 1 mile from crisis, methadone, or inpatient treatment programs.
    - While there are several residential treatment programs in Buffalo, almost all of highest risk ZIP codes 14202, 14203, 14204, and large portions of 14211 are more than 1 mile away from this type of program.

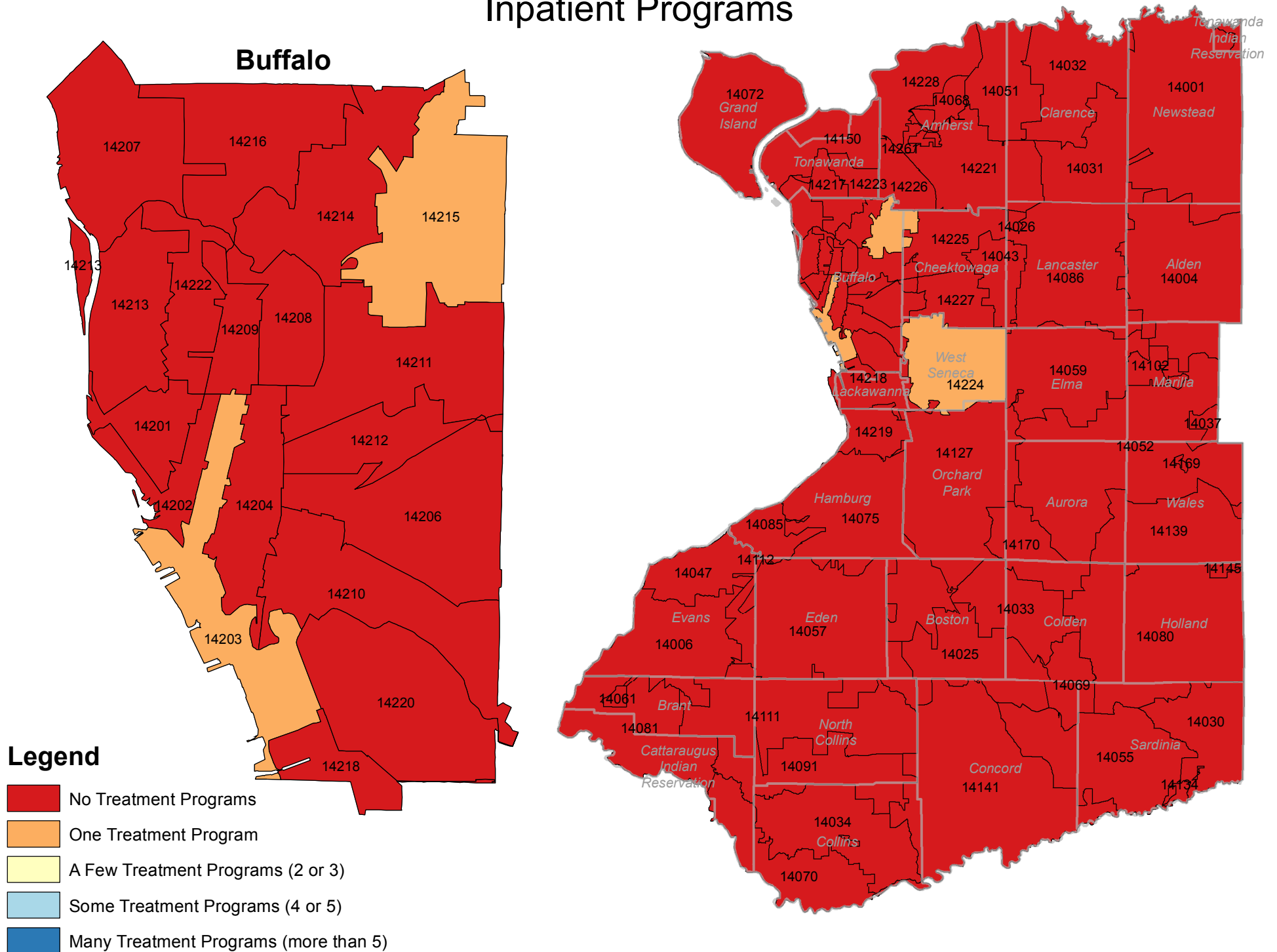
# Erie County Chemical Dependency Treatment Programs: All Programs and Types



# Erie County Chemical Dependency Treatment Programs: Crisis Programs

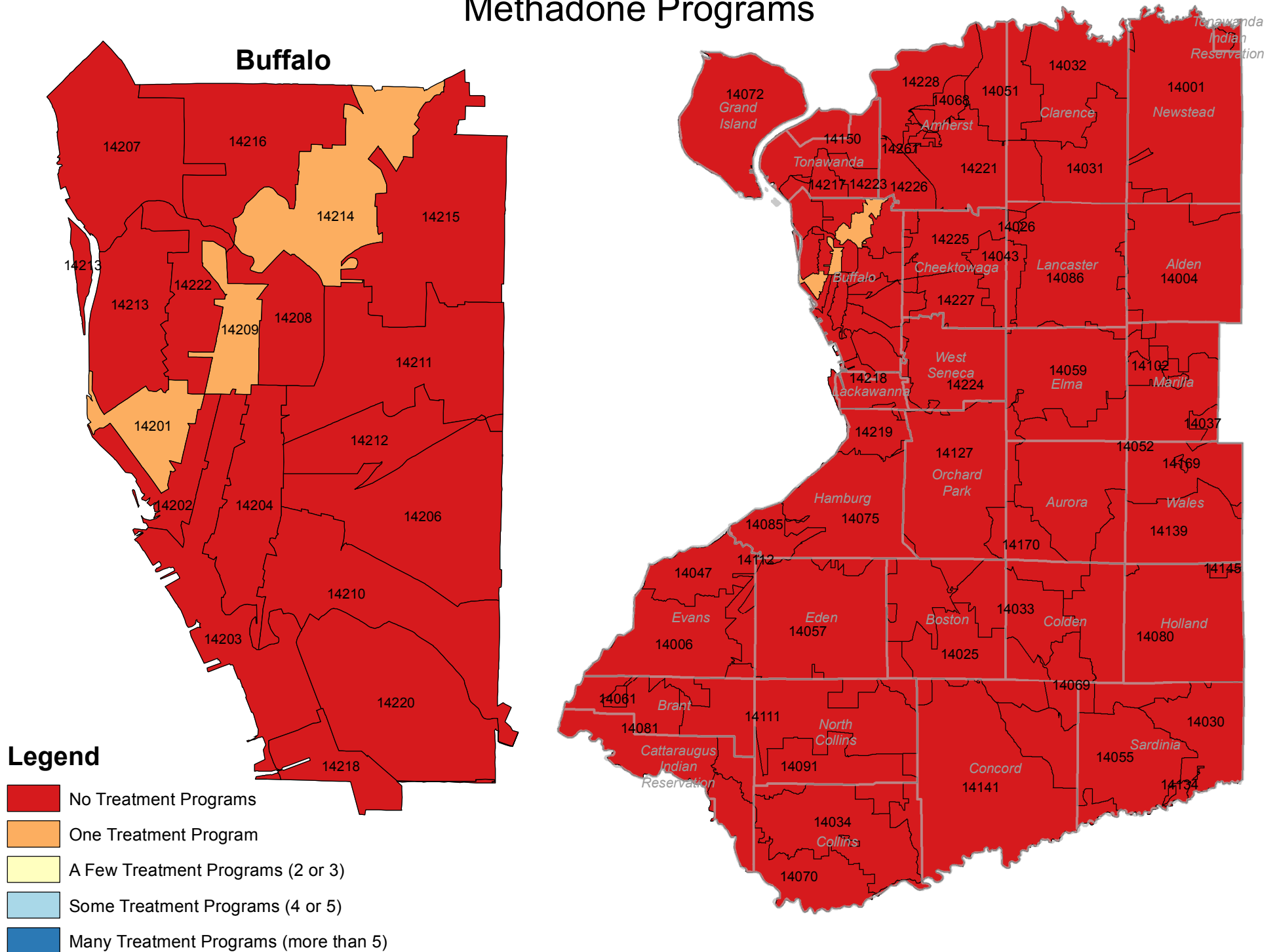


# Erie County Chemical Dependency Treatment Programs: Inpatient Programs



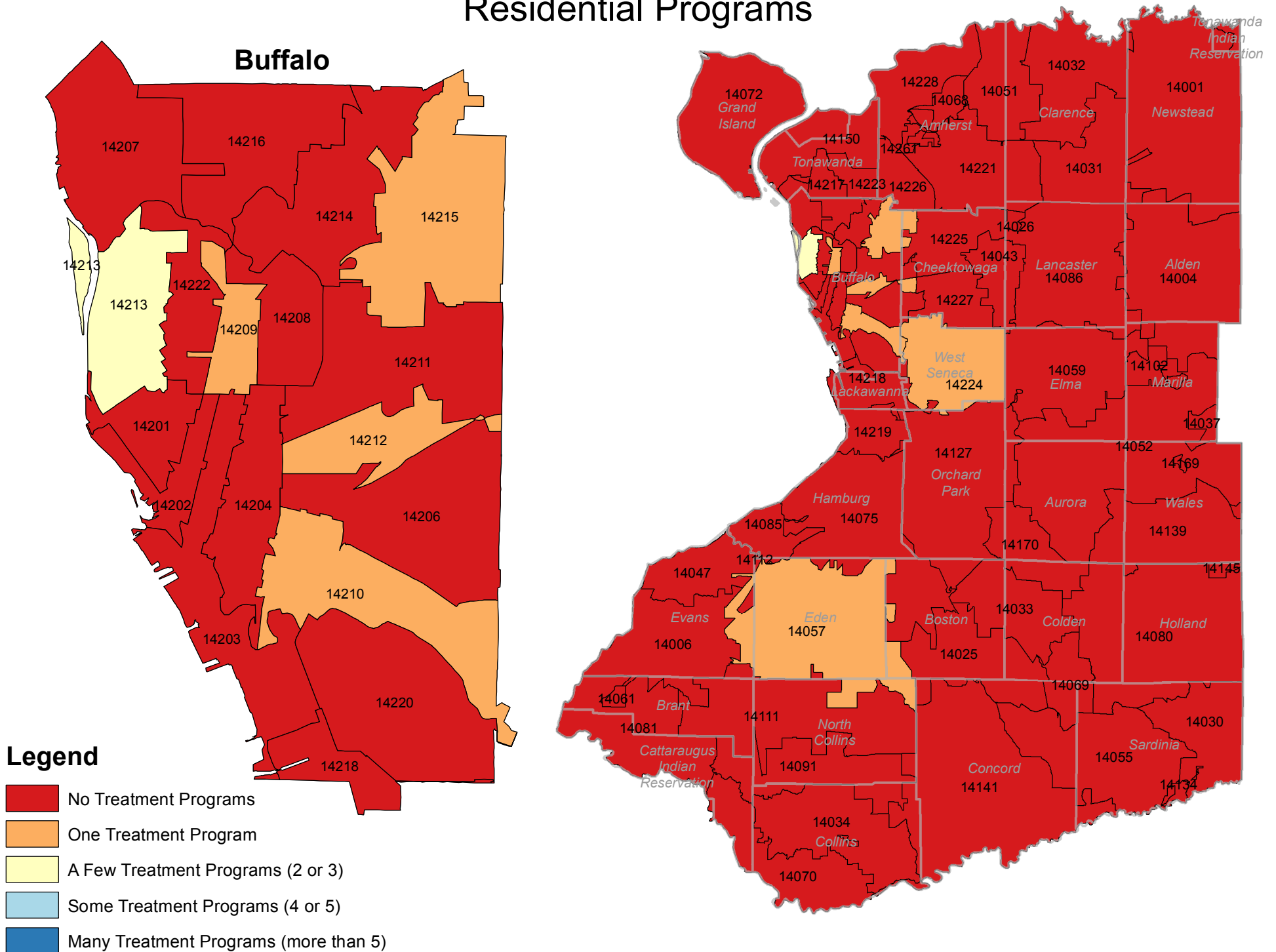


# Erie County Chemical Dependency Treatment Programs: Methadone Programs



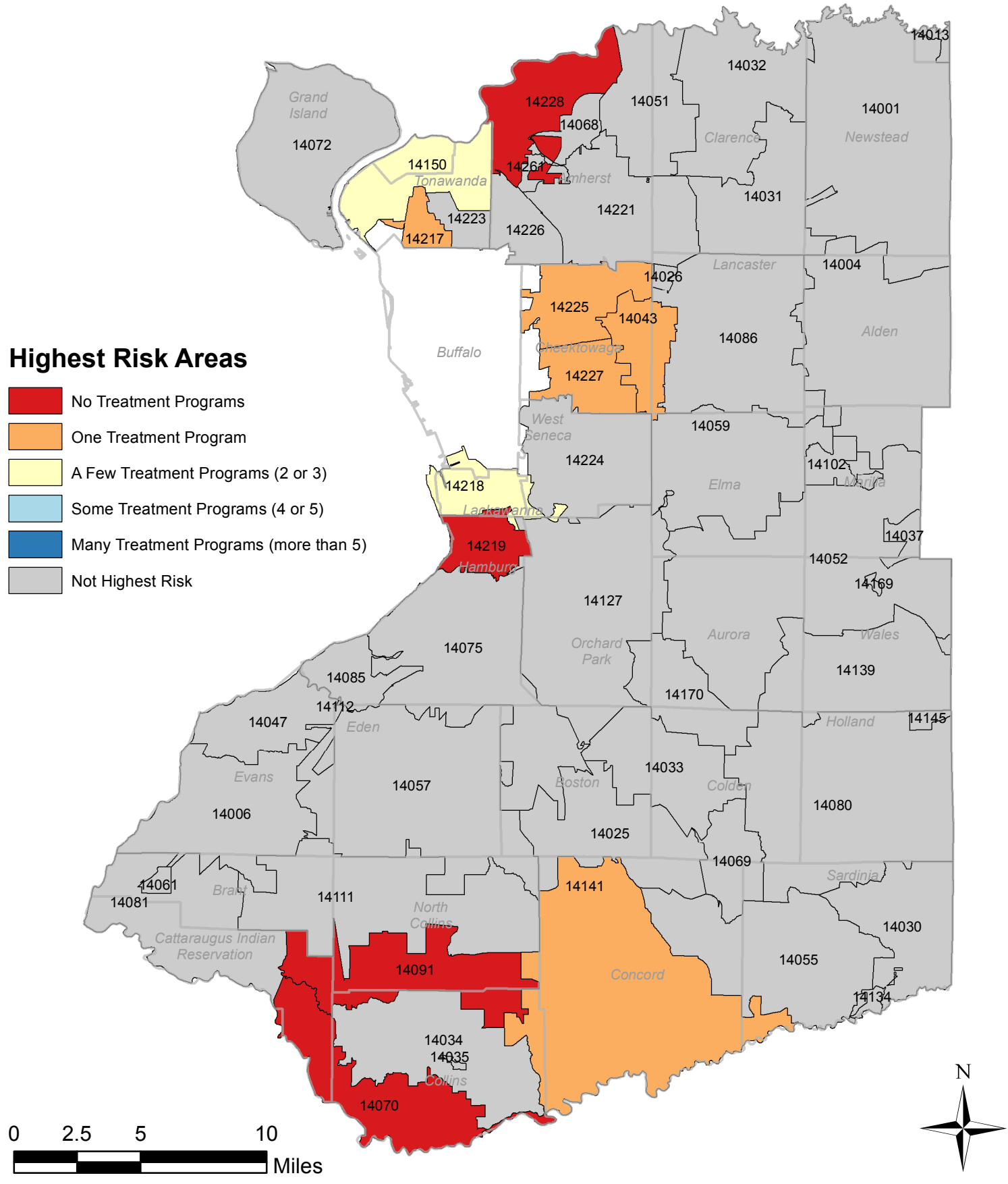


# Erie County Chemical Dependency Treatment Programs: Residential Programs



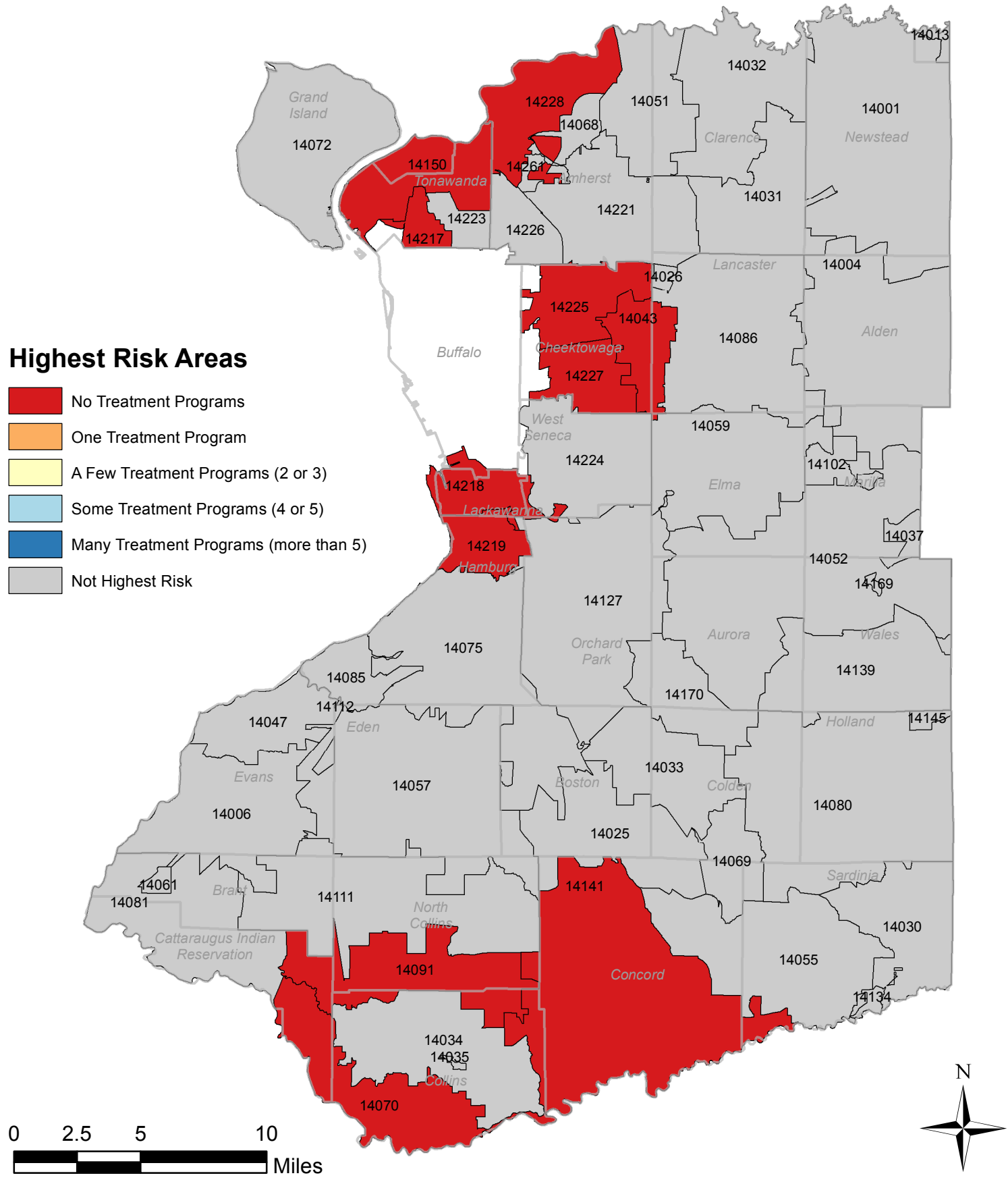
# ZIP Codes with Highest Level of Aggregated Risk by Number of Chemical Dependency Programs

[Erie County Excluding City of Buffalo, with Municipal Boundaries]



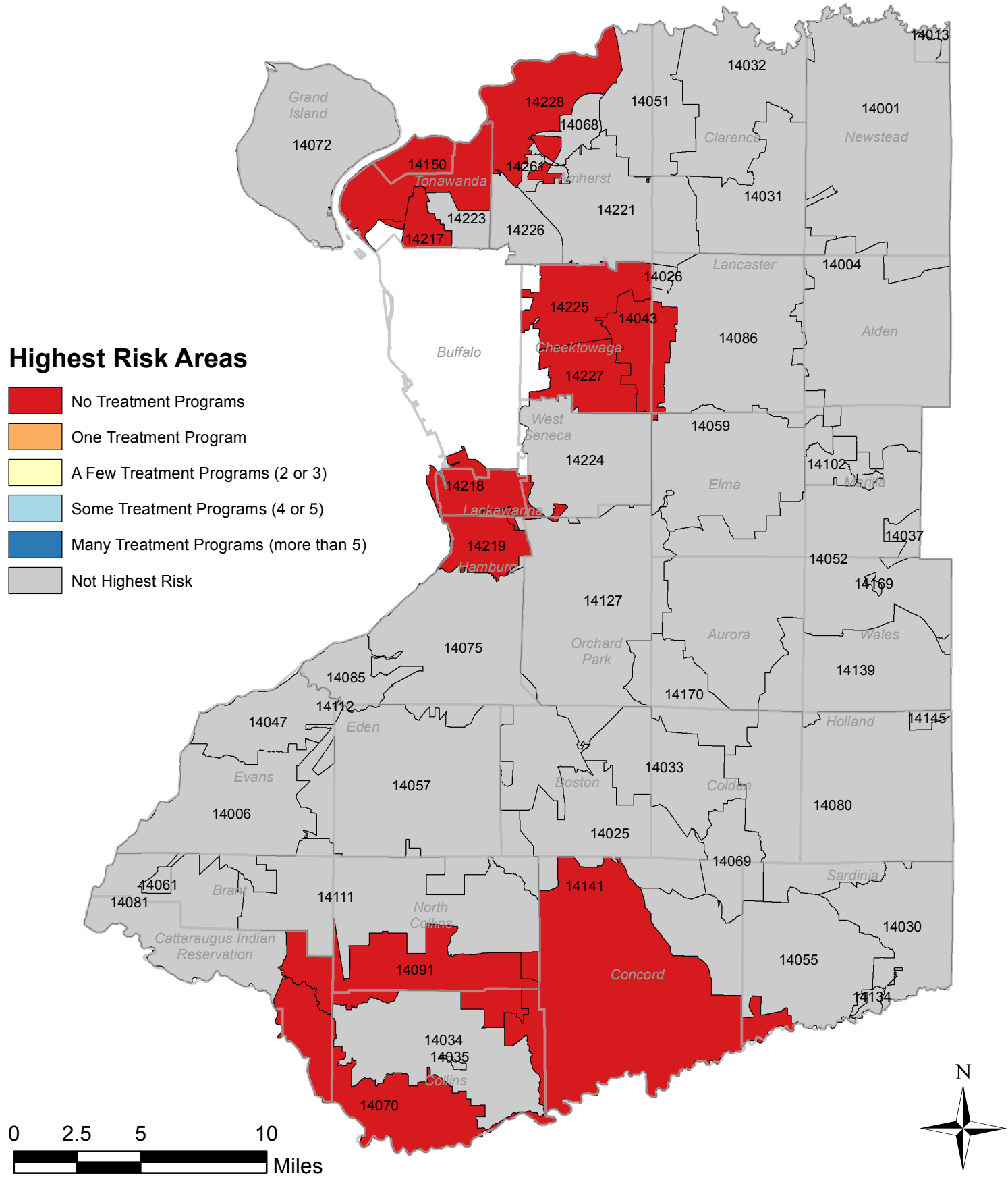
# ZIP Codes with Highest Level of Aggregated Risk by Number of Crisis Programs

[Erie County Excluding City of Buffalo, with Municipal Boundaries]



# ZIP Codes with Highest Level of Aggregated Risk by Number of Inpatient Programs

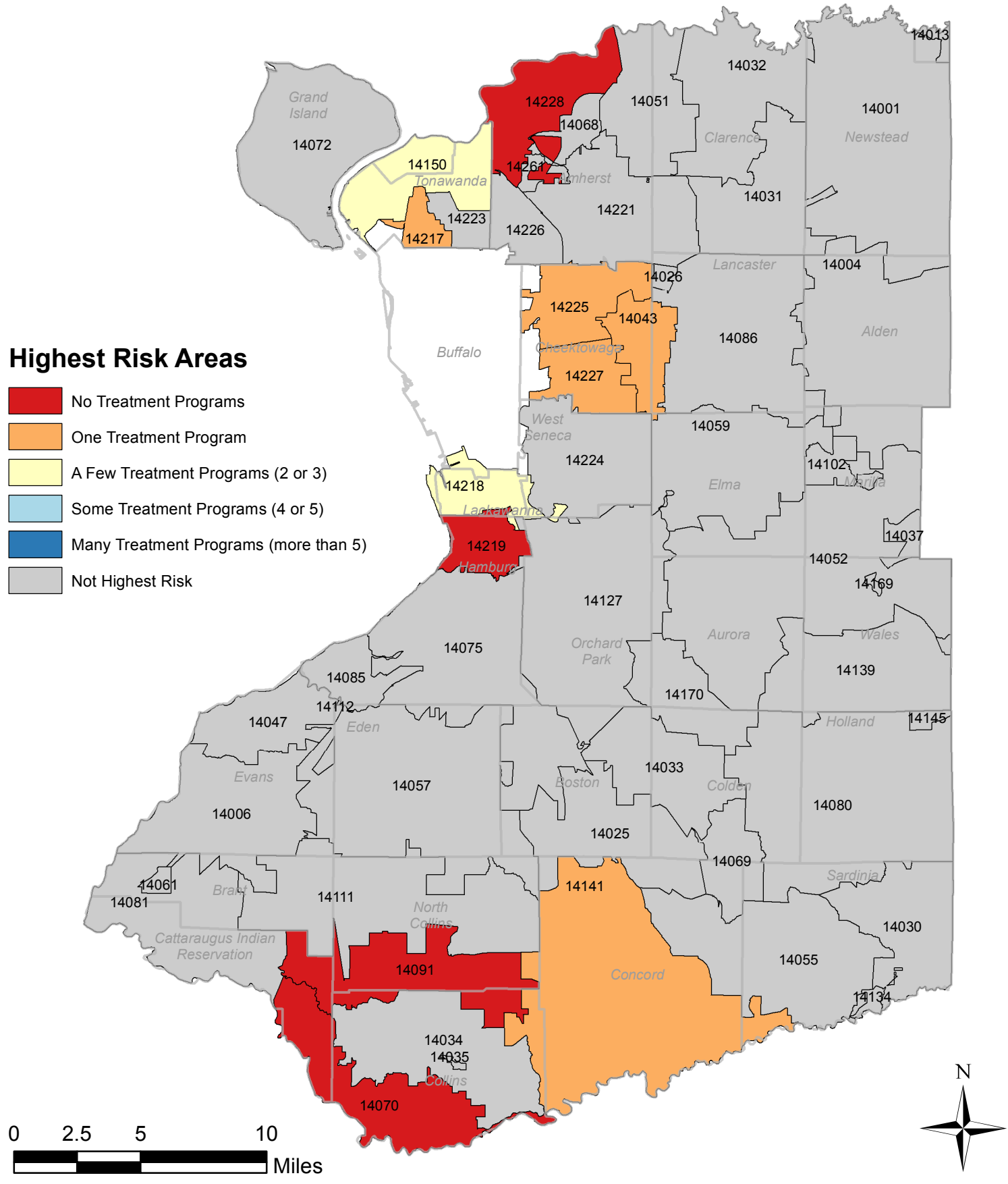
[Erie County Excluding City of Buffalo, with Municipal Boundaries]





# ZIP Codes with Highest Level of Aggregated Risk by Number of Outpatient Programs

[Erie County Excluding City of Buffalo, with Municipal Boundaries]

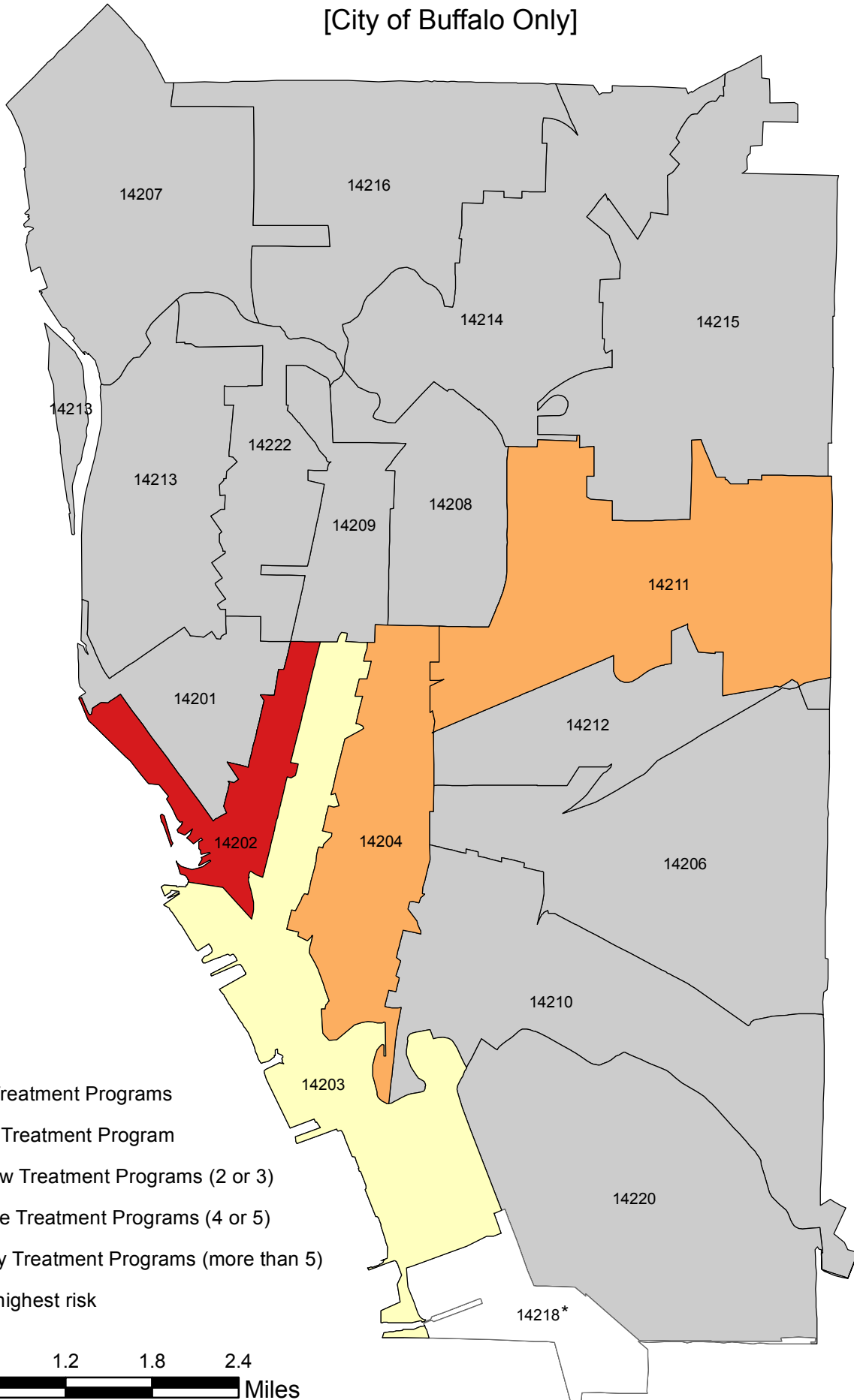






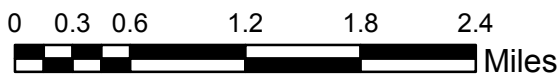
# ZIP Codes with Highest Level of Aggregated Risk by Number of Chemical Dependency Programs

[City of Buffalo Only]



## Legend

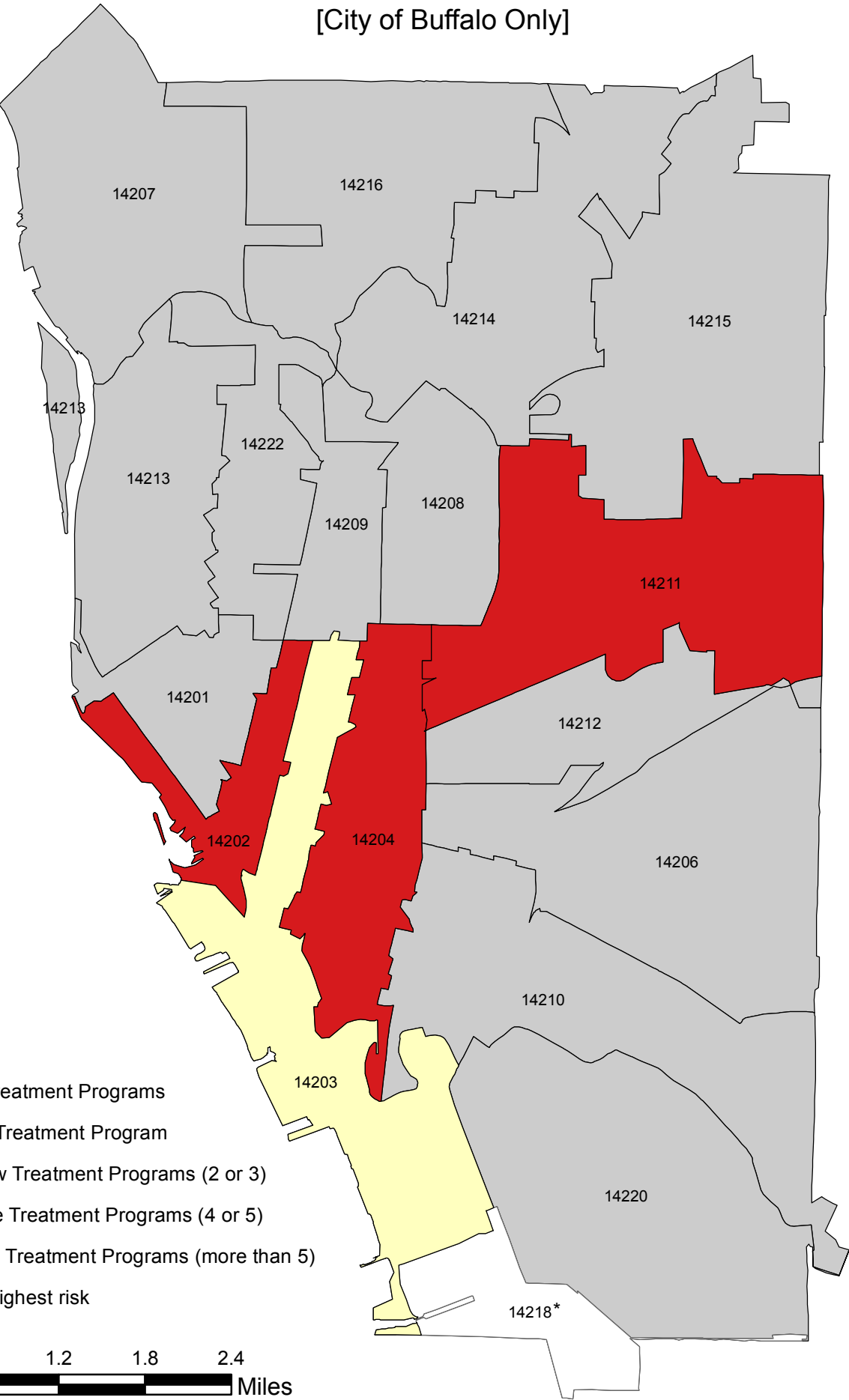
- No Treatment Programs
- One Treatment Program
- A Few Treatment Programs (2 or 3)
- Some Treatment Programs (4 or 5)
- Many Treatment Programs (more than 5)
- Not highest risk



\* The majority of ZIP Code 14218 is outside the City of Buffalo.

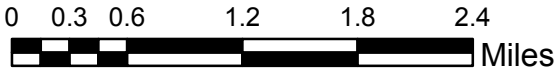
# ZIP Codes with Highest Level of Aggregated Risk by Number of Crisis Programs

[City of Buffalo Only]



### Legend

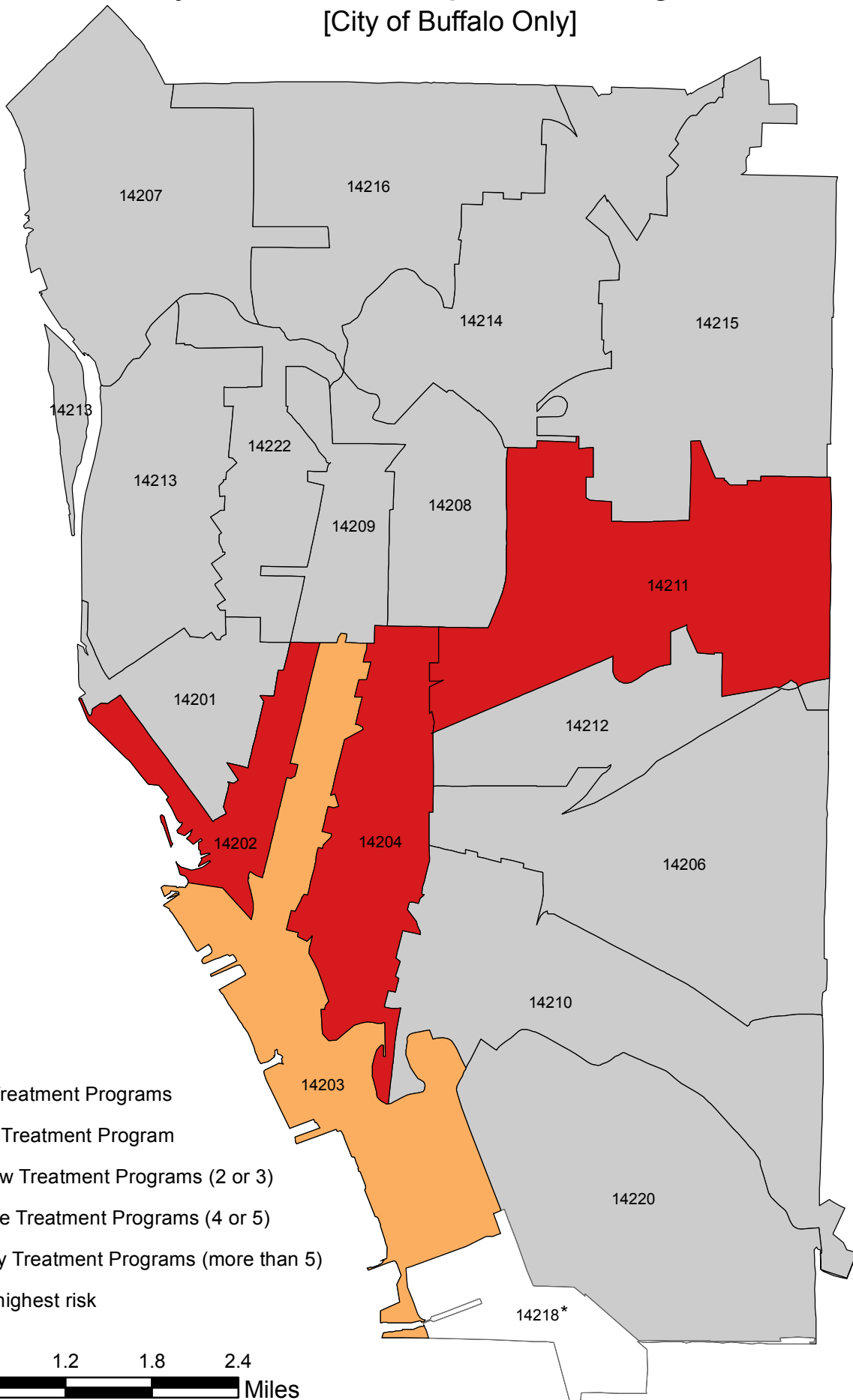
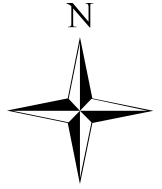
- No Treatment Programs
- One Treatment Program
- A Few Treatment Programs (2 or 3)
- Some Treatment Programs (4 or 5)
- Many Treatment Programs (more than 5)
- Not highest risk



\* The majority of ZIP Code 14218 is outside the City of Buffalo.

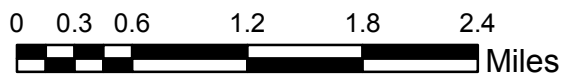
# ZIP Codes with Highest Level of Aggregated Risk by Number of Inpatient Programs

[City of Buffalo Only]



## Legend

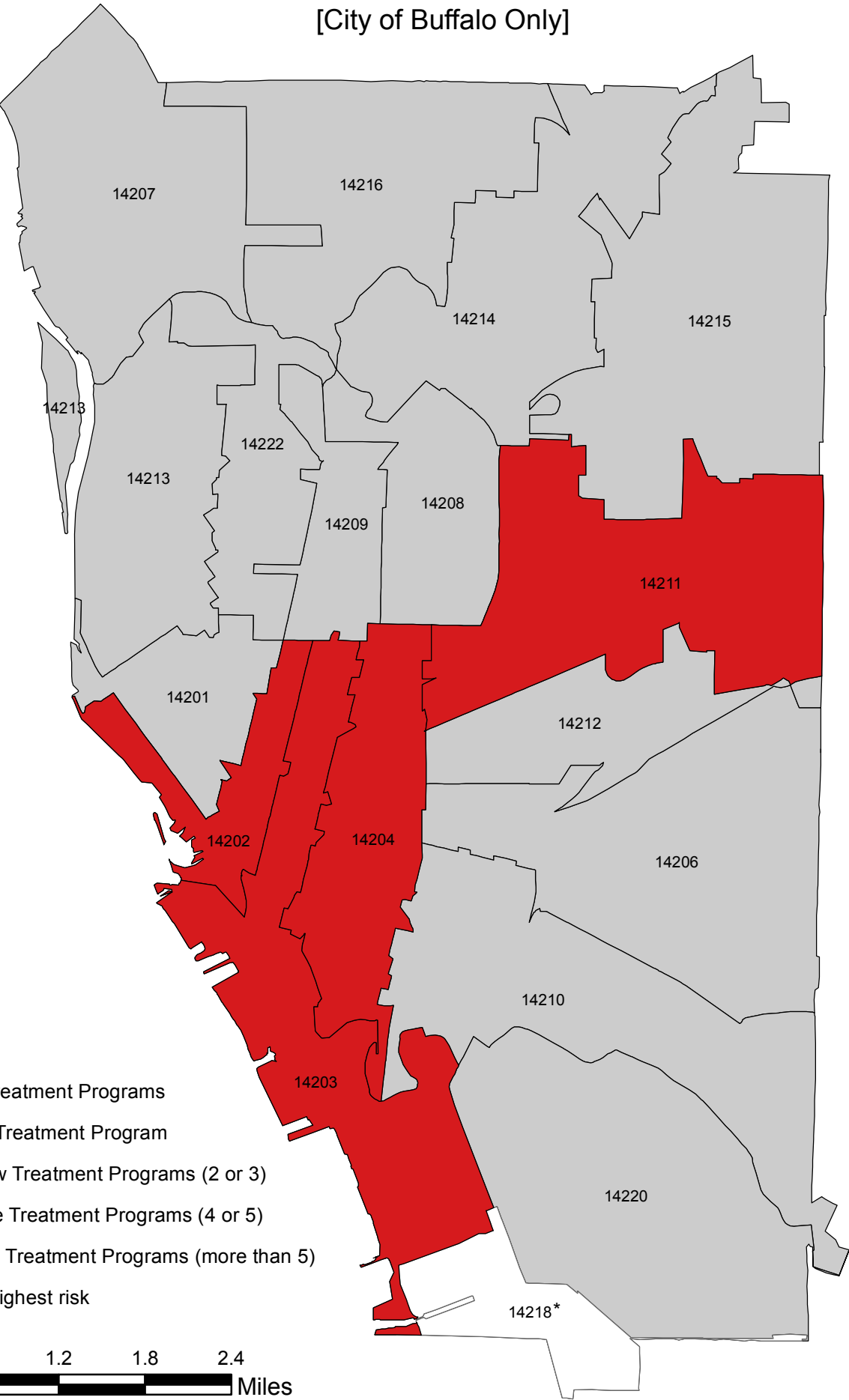
- No Treatment Programs
- One Treatment Program
- A Few Treatment Programs (2 or 3)
- Some Treatment Programs (4 or 5)
- Many Treatment Programs (more than 5)
- Not highest risk



\* The majority of ZIP Code 14218 is outside the City of Buffalo.

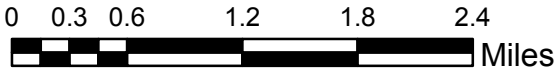
# ZIP Codes with Highest Level of Aggregated Risk by Number of Methadone Programs

[City of Buffalo Only]



### Legend

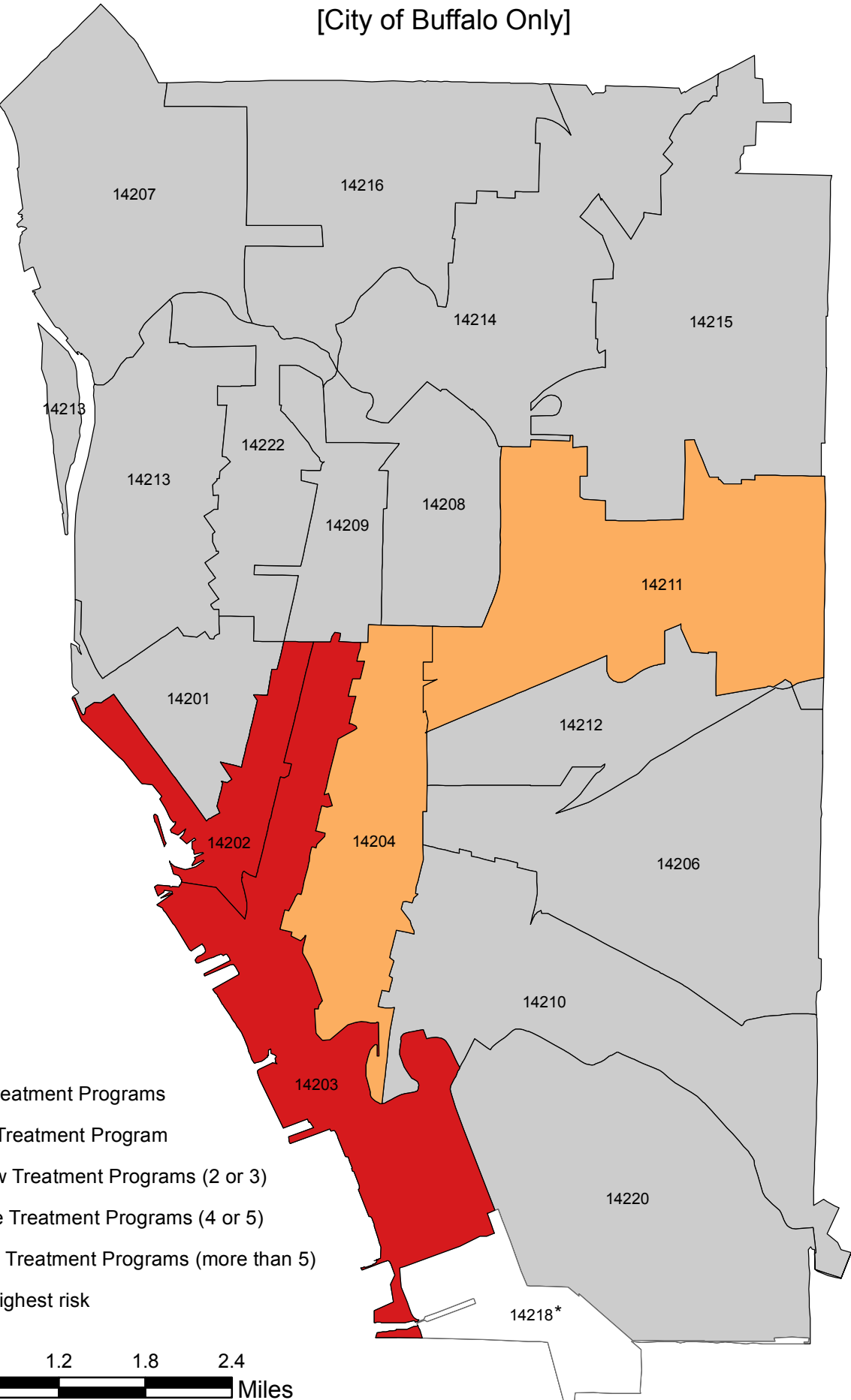
- No Treatment Programs
- One Treatment Program
- A Few Treatment Programs (2 or 3)
- Some Treatment Programs (4 or 5)
- Many Treatment Programs (more than 5)
- Not highest risk



\* The majority of ZIP Code 14218 is outside the City of Buffalo.

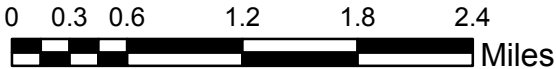
# ZIP Codes with Highest Level of Aggregated Risk by Number of Outpatient Programs

[City of Buffalo Only]



### Legend

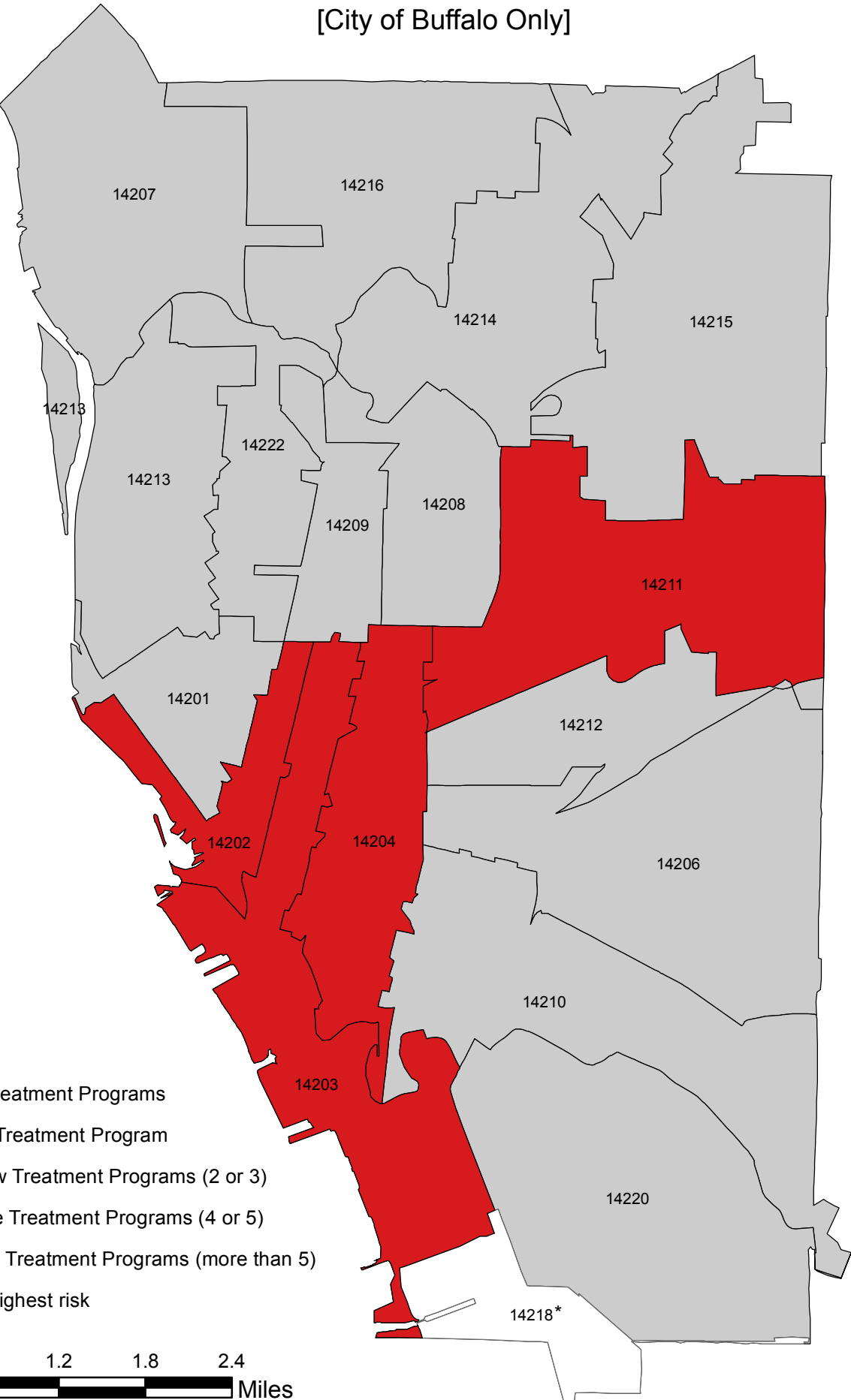
- No Treatment Programs
- One Treatment Program
- A Few Treatment Programs (2 or 3)
- Some Treatment Programs (4 or 5)
- Many Treatment Programs (more than 5)
- Not highest risk



\* The majority of ZIP Code 14218 is outside the City of Buffalo.

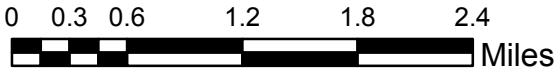
# ZIP Codes with Highest Level of Aggregated Risk by Number of Residential Programs

[City of Buffalo Only]



### Legend

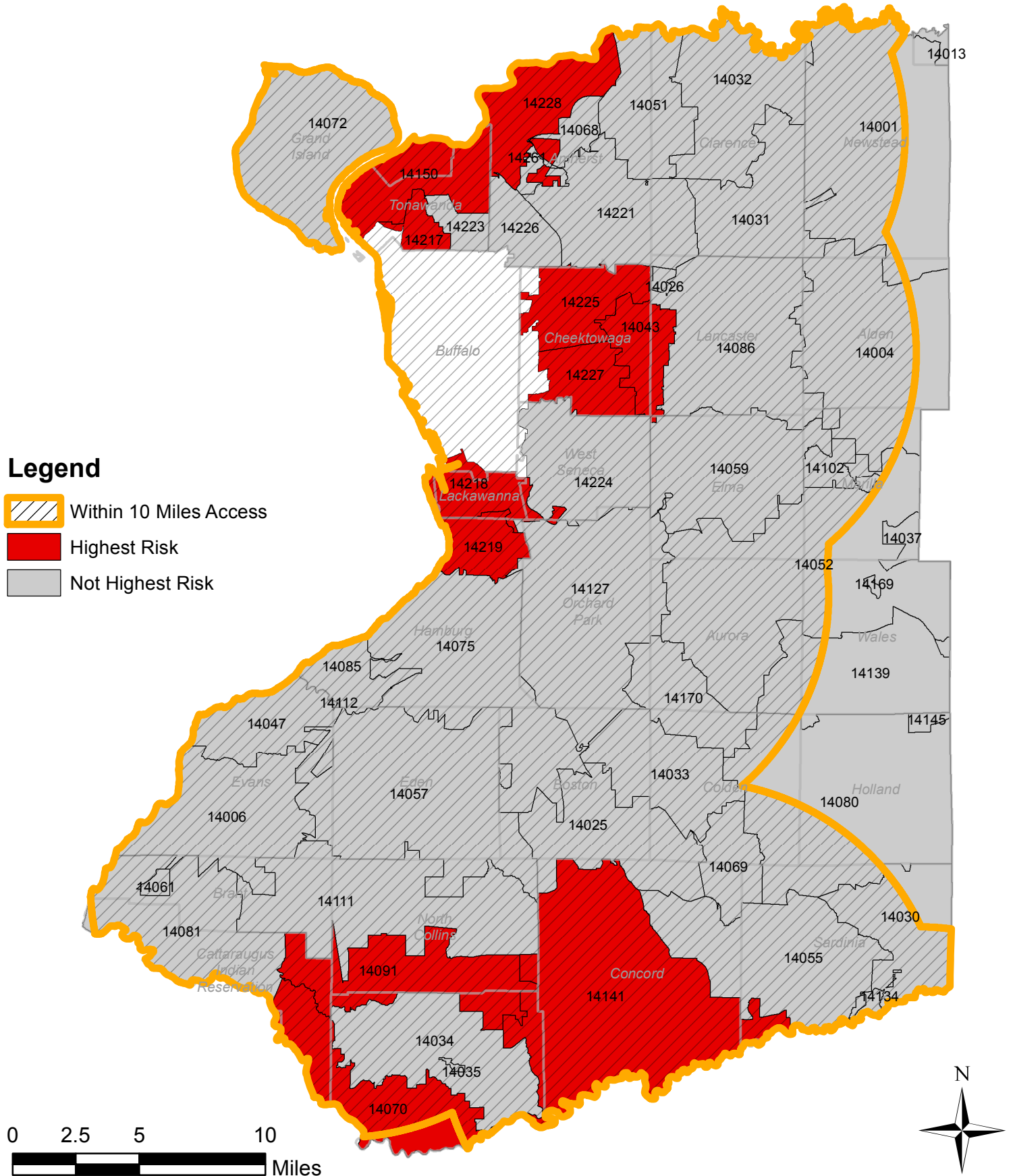
- No Treatment Programs
- One Treatment Program
- A Few Treatment Programs (2 or 3)
- Some Treatment Programs (4 or 5)
- Many Treatment Programs (more than 5)
- Not highest risk



\* The majority of ZIP Code 14218 is outside the City of Buffalo.

# Accessibility to Chemical Dependency Programs (Within 10 Miles Access, Includes Out of County Programs)

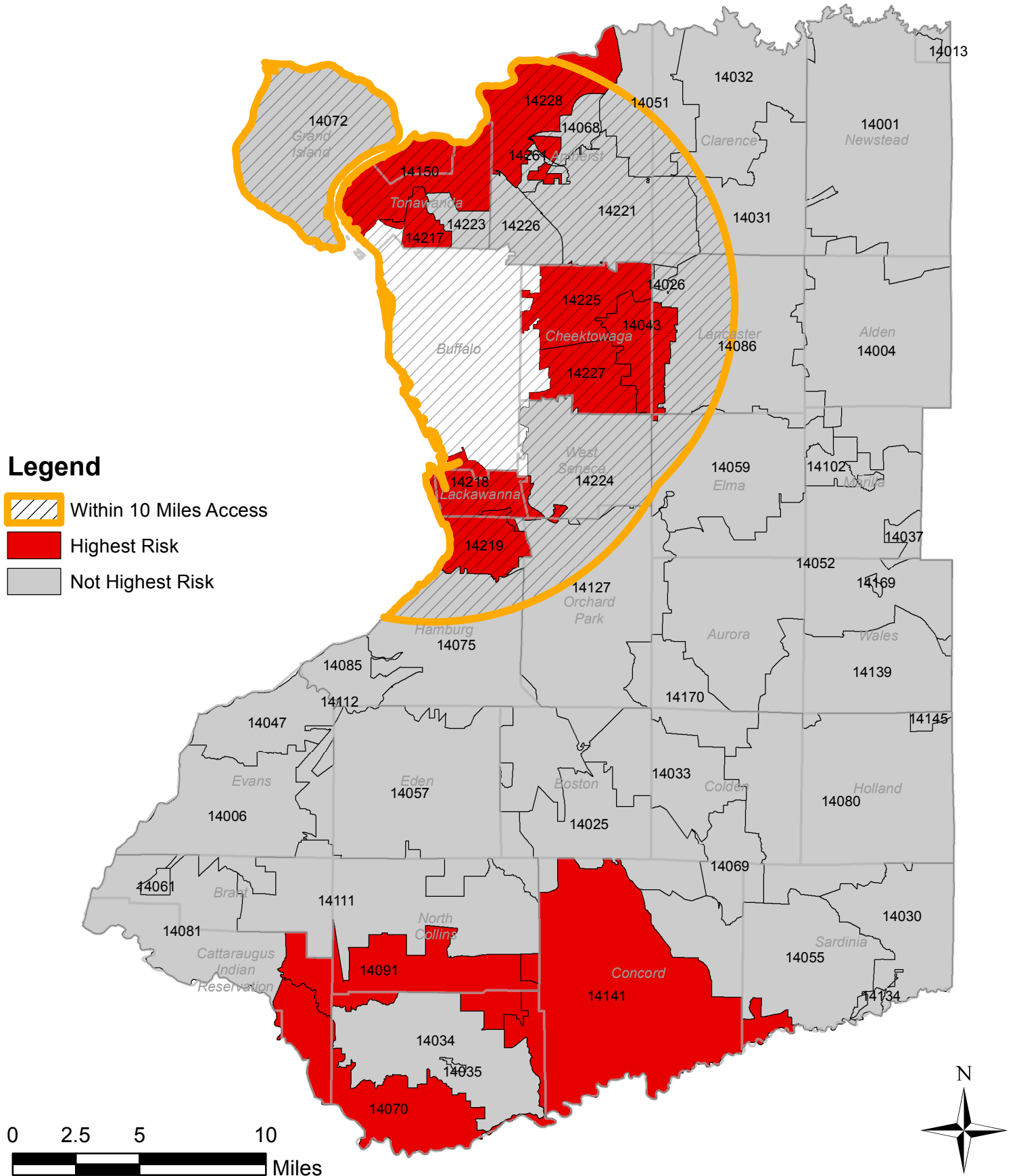
[Erie County Excluding City of Buffalo, with Municipal Boundaries]





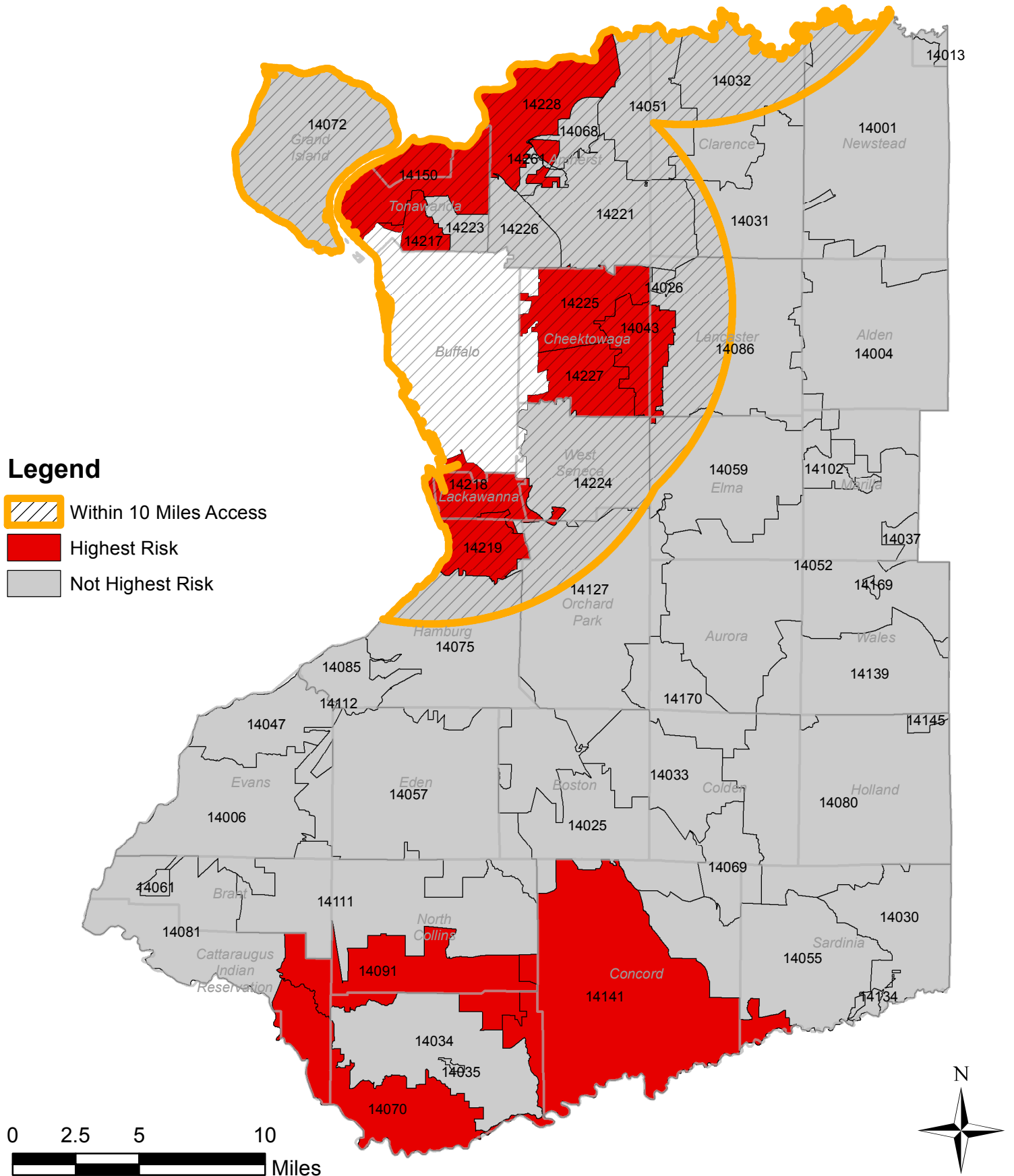
# Accessibility to Crisis Programs (Within 10 Miles Access, Includes Out of County Programs)

[Erie County Excluding City of Buffalo, with Municipal Boundaries]



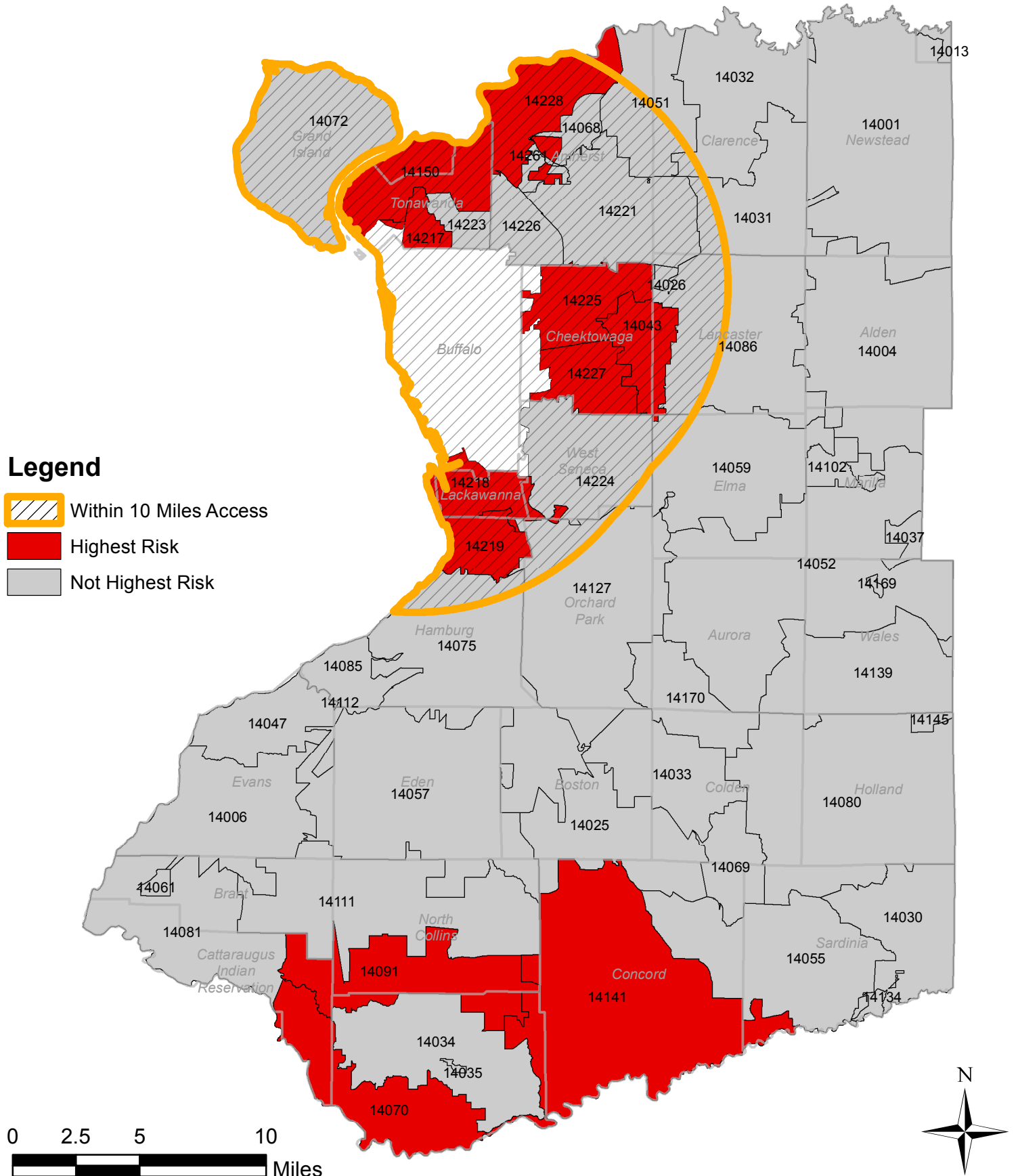
# Accessibility to Inpatient Programs (Within 10 Miles Access, Includes Out of County Programs)

[Erie County Excluding City of Buffalo, with Municipal Boundaries]



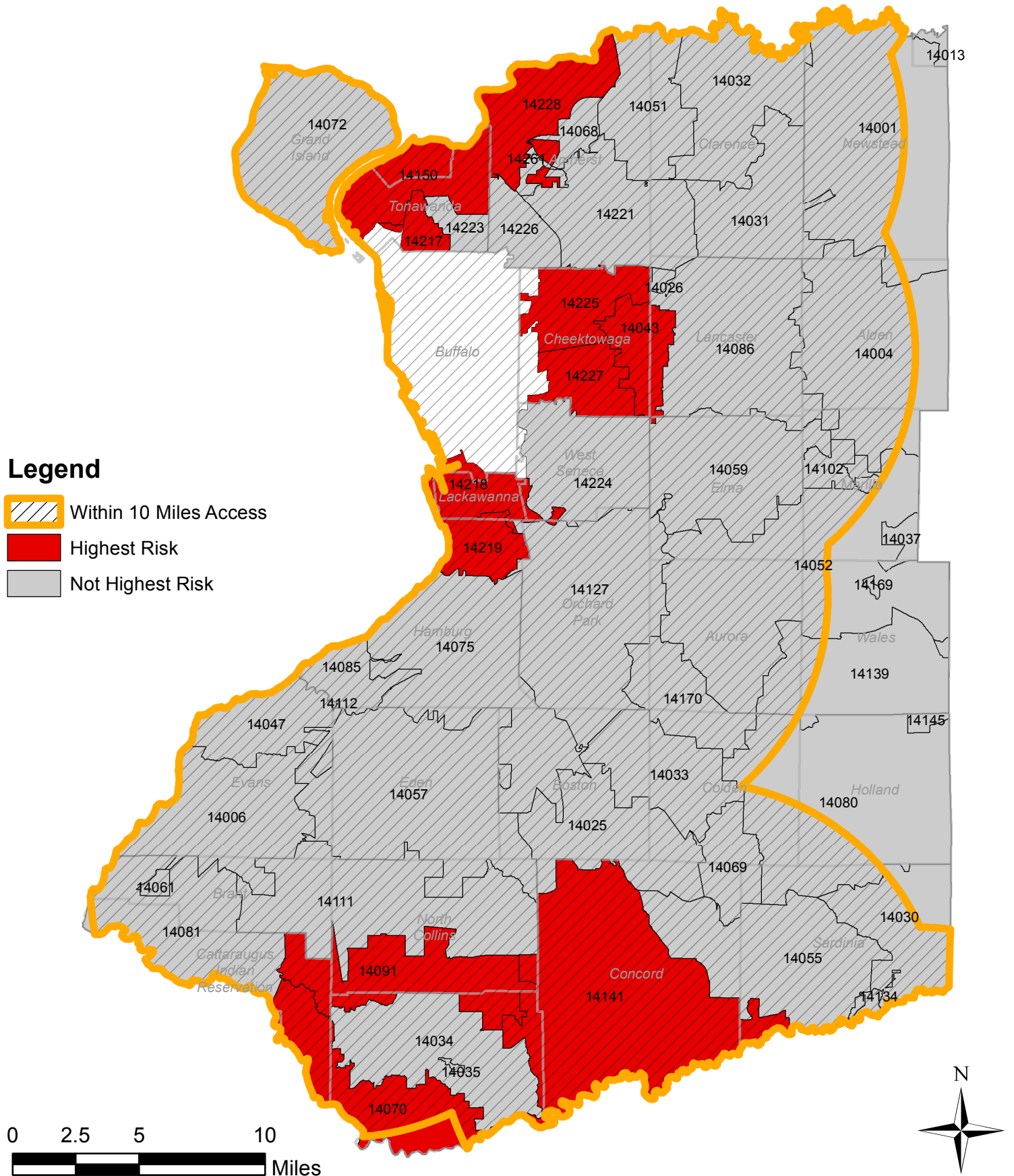
# Accessibility to Methadone Programs (Within 10 Miles Access, Includes Out of County Programs)

[Erie County Excluding City of Buffalo, with Municipal Boundaries]



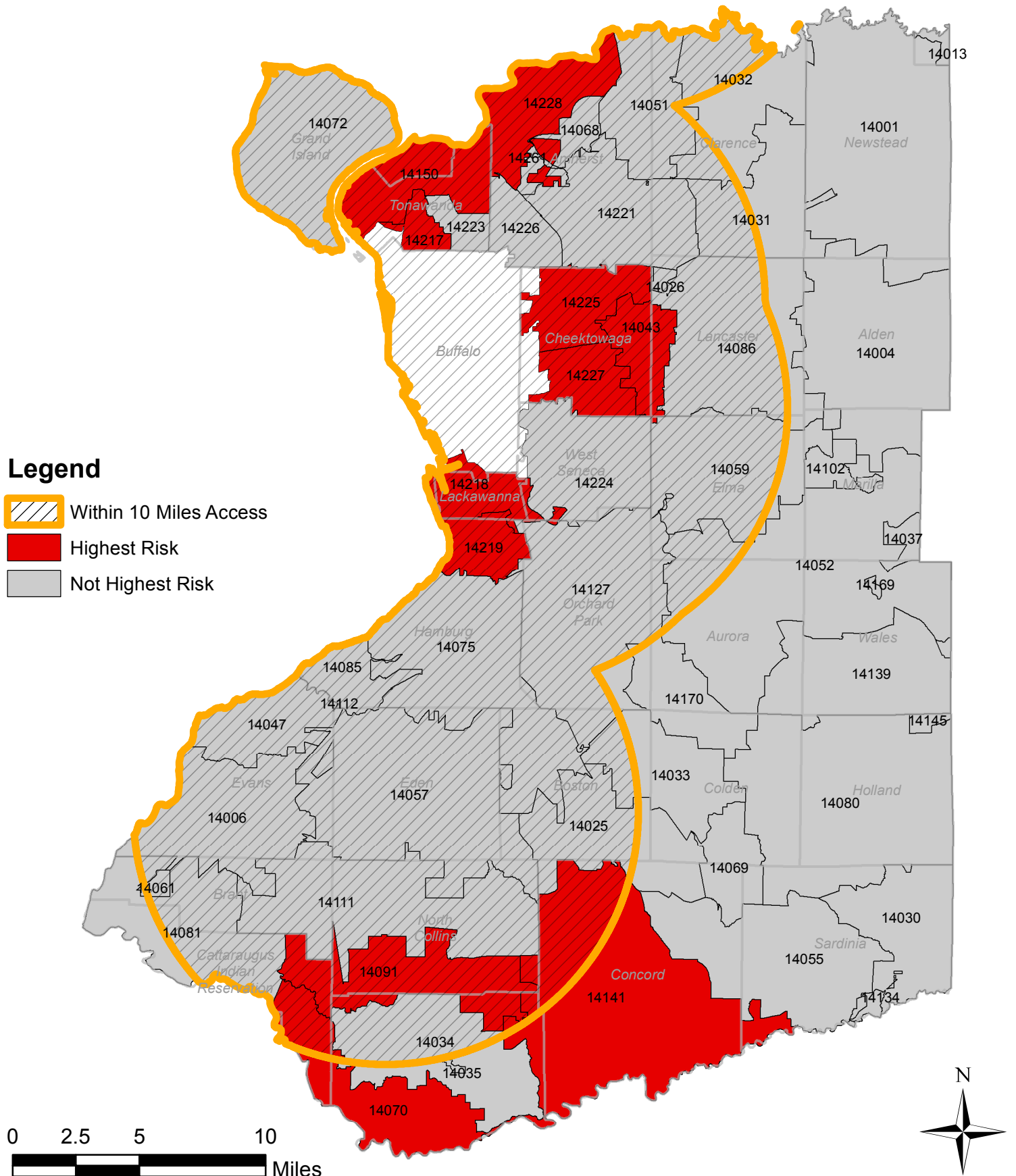
# Accessibility to Outpatient Programs (Within 10 Miles Access, Includes Out of County Programs)

[Erie County Excluding City of Buffalo, with Municipal Boundaries]



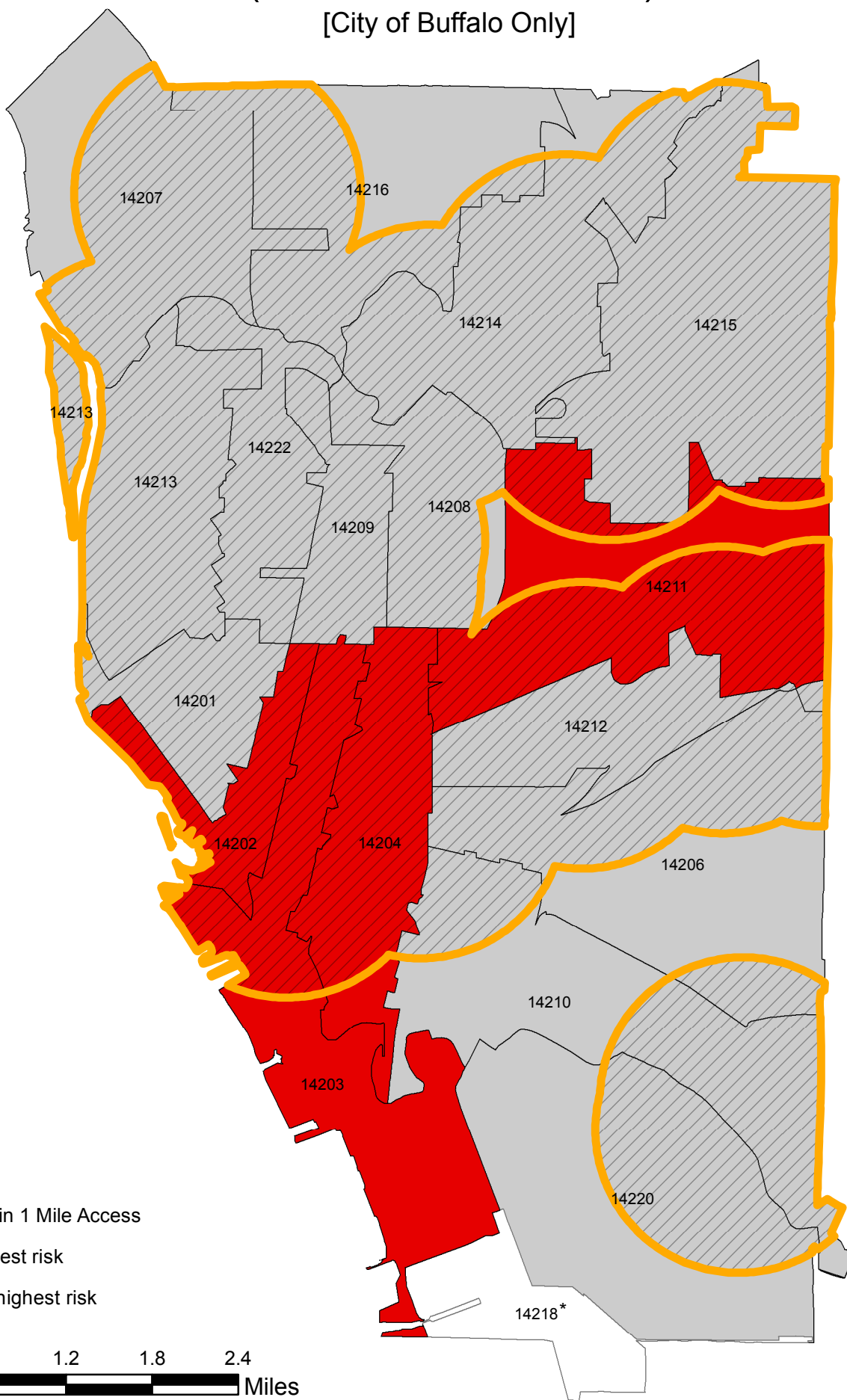
# Accessibility to Residential Programs (Within 10 Miles Access, Includes Out of County Programs)

[Erie County Excluding City of Buffalo, with Municipal Boundaries]






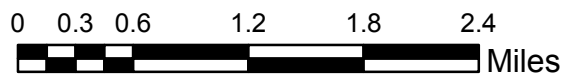
# Accessibility to Chemical Dependency Treatment Programs (Within 1 Mile Access)

[City of Buffalo Only]



## Legend

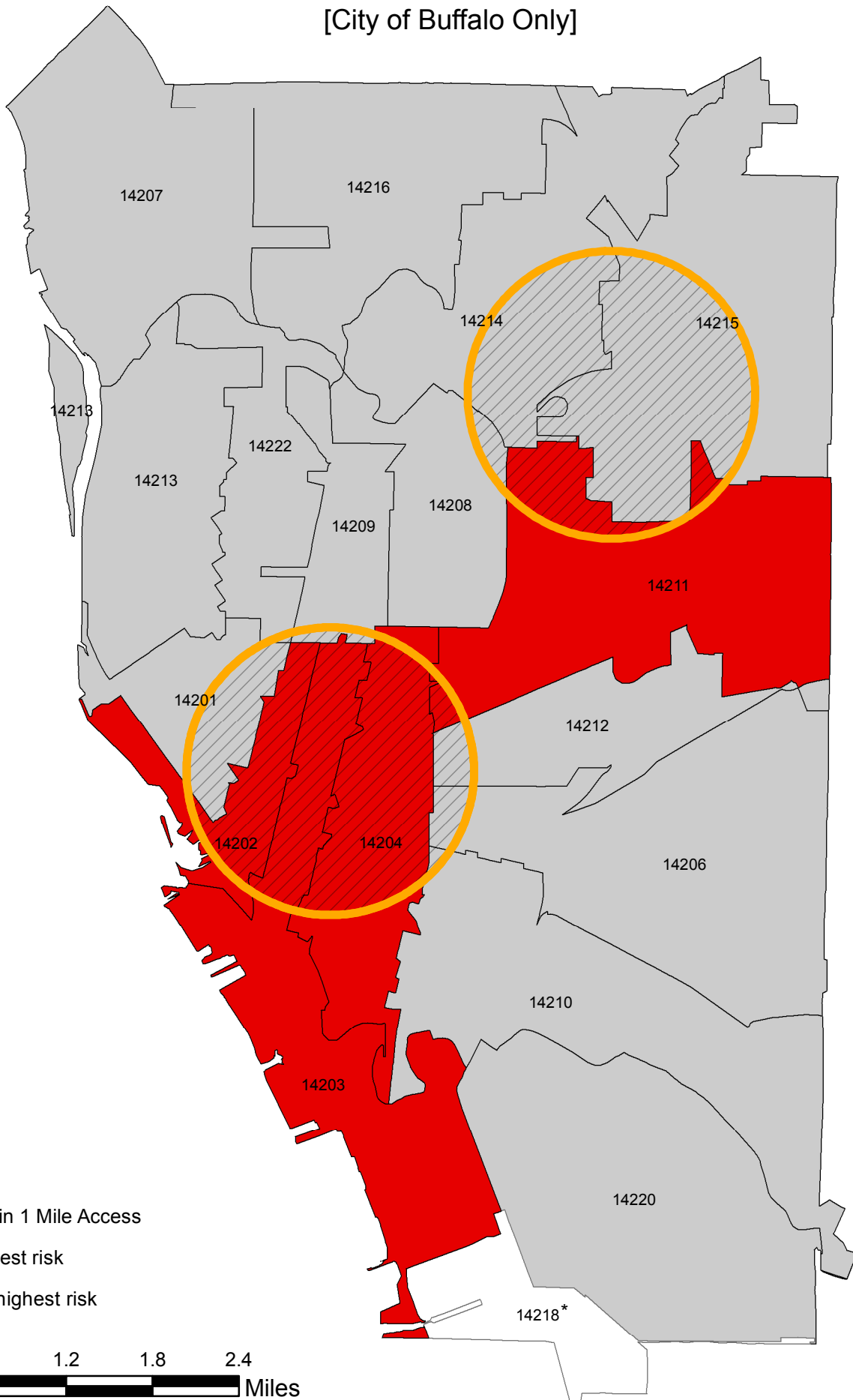
-  Within 1 Mile Access
-  Highest risk
-  Not highest risk






\* The majority of ZIP Code 14218 is outside the City of Buffalo.

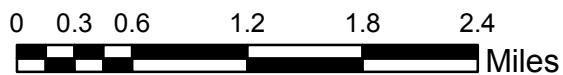
# Accessibility to Crisis Programs (Within 1 Mile Access)

[City of Buffalo Only]



## Legend

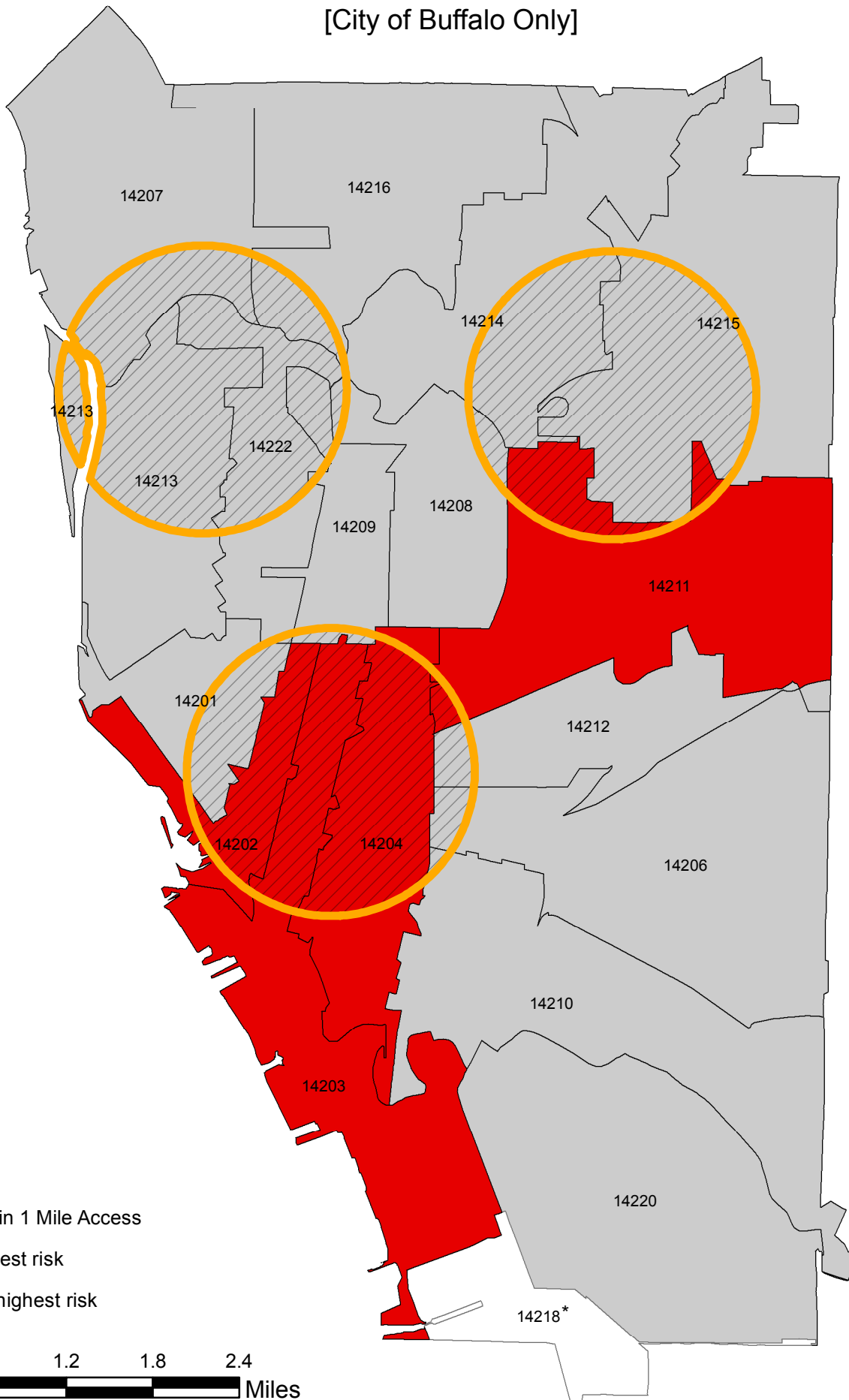
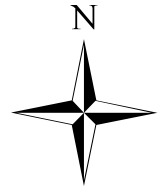
-  Within 1 Mile Access
-  Highest risk
-  Not highest risk






\* The majority of ZIP Code 14218 is outside the City of Buffalo.

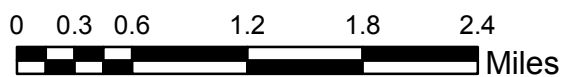
# Accessibility to Inpatient Programs (Within 1 Mile Access)

[City of Buffalo Only]



## Legend

-  Within 1 Mile Access
-  Highest risk
-  Not highest risk

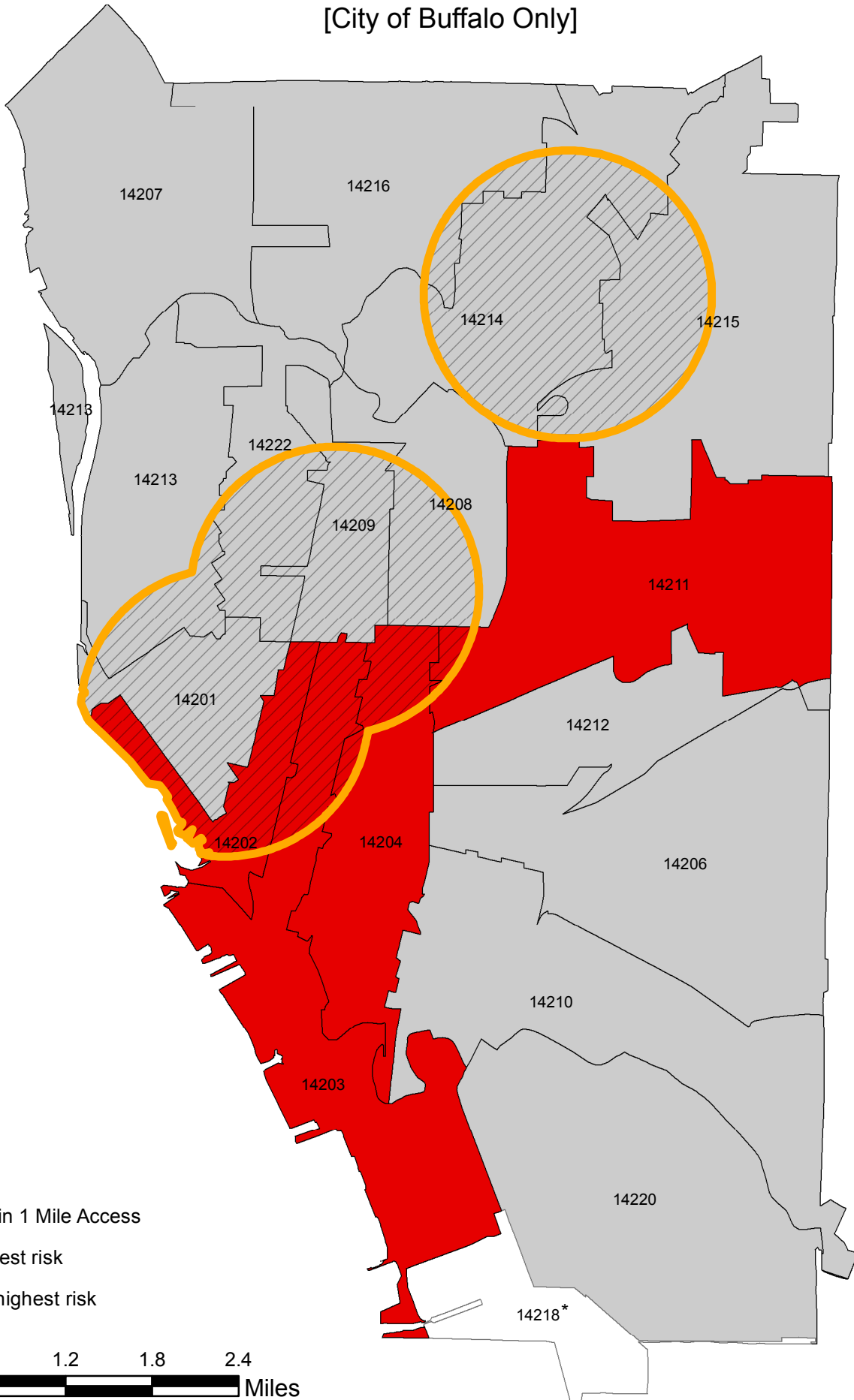
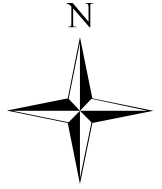


\* The majority of ZIP Code 14218 is outside the City of Buffalo.






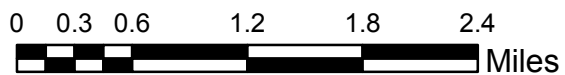
# Accessibility to Methadone Programs (Within 1 Mile Access)

[City of Buffalo Only]



## Legend

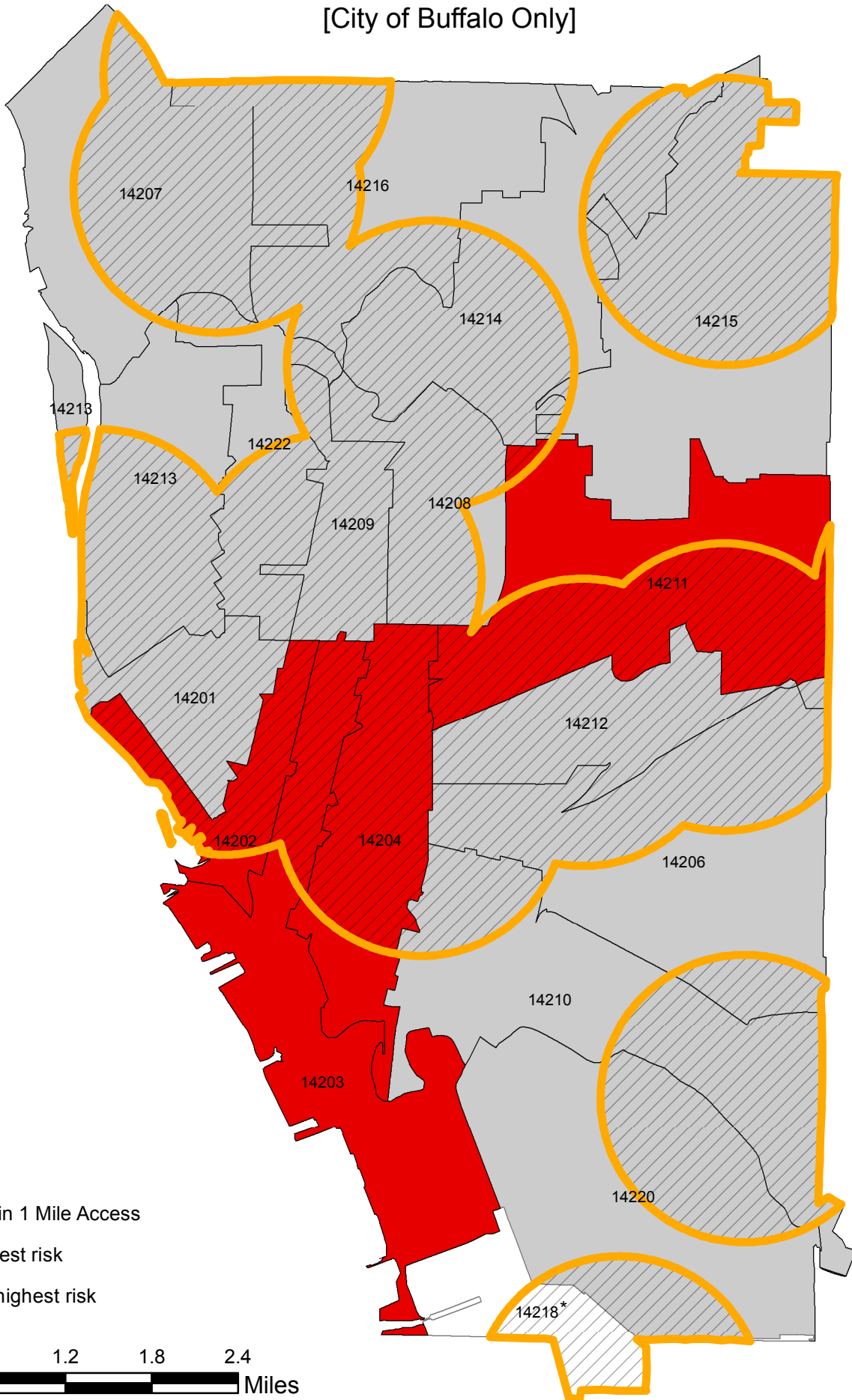
-  Within 1 Mile Access
-  Highest risk
-  Not highest risk






\* The majority of ZIP Code 14218 is outside the City of Buffalo.

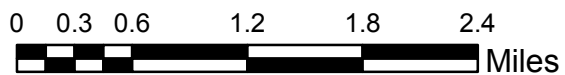
# Accessibility to Outpatient Programs (Within 1 Mile Access)

[City of Buffalo Only]



## Legend

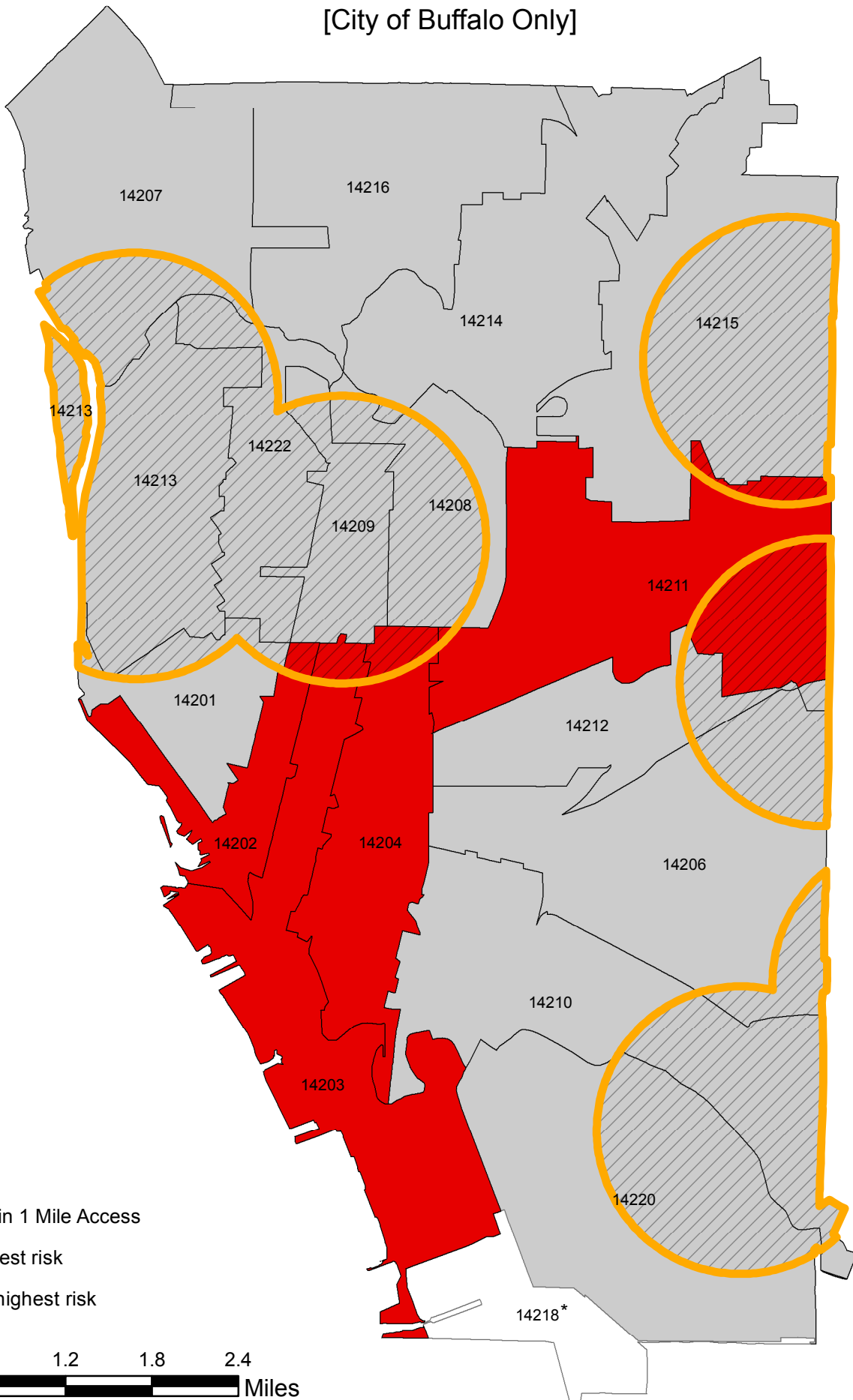
-  Within 1 Mile Access
-  Highest risk
-  Not highest risk






\* The majority of ZIP Code 14218 is outside the City of Buffalo.

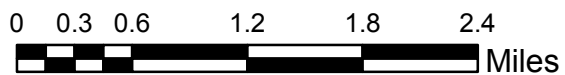
# Accessibility to Residential Programs (Within 1 Mile Access)

[City of Buffalo Only]



## Legend

-  Within 1 Mile Access
-  Highest risk
-  Not highest risk



\* The majority of ZIP Code 14218 is outside the City of Buffalo.